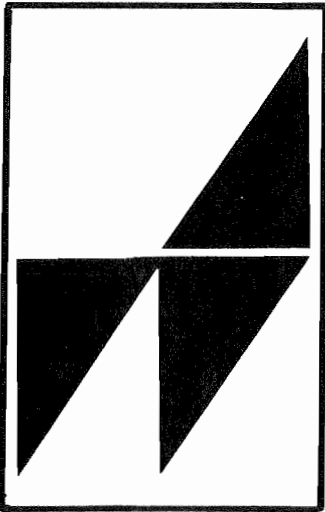


STATE OF WISCONSIN



WISCONSIN ARTS BOARD

BIENNIAL REPORT 1977-1979



WISCONSIN
ARTS BOARD

123 W. WASHINGTON AVE.
MADISON
WISCONSIN 53702

608/266-0190

GOVERNOR
LEE SHERMAN DREYFUS

CHAIRPERSON
RICHARD R. TESCHNER

EXECUTIVE DIRECTOR
JERROLD B. ROUBY

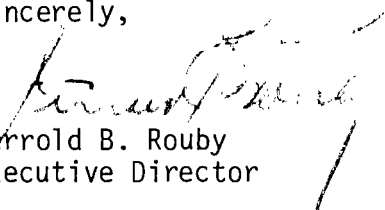
September 22, 1980

Honorable Lee Sherman Dreyfus
Governor, State of Wisconsin
Capitol Building
Madison, Wisconsin 53702

Dear Governor Dreyfus:

Attached is the 1977-79 Biennial Report for the Wisconsin Arts Board as requested by Section 15.04(1)(d) of the Wisconsin Statutes. Included in the report are reviews of the agency's programs and operations during the 1977-79 biennium and descriptions of the agency's major goals for the 1979-81 biennium.

Sincerely,



Jerrold B. Rouby
Executive Director

JBR:sf

Attachment

W I S C O N S I N A R T S B O A R D

1 9 7 7 - 1 9 7 9

B I E N N I A L R E P O R T

TABLE OF CONTENTS

The Wisconsin Arts Board in Brief	Page 1
Members of the Board	Page 2
Organization Chart	Page 3
Report from the Executive Director	Page 4
General Grants Program	Page 5
Community Arts Program	Page 6
Artists-in-Residence Program	Page 7
Special Projects/Special Programs	Page 9
Appendix - Grants Awarded by the Arts Board during the 1977-79 Biennium	Page 11

THE WISCONSIN ARTS BOARD IN BRIEF

Established in 1973, the Wisconsin Arts Board is the state agency responsible for preserving Wisconsin's arts, strengthening its arts resources, and making the arts more available to its citizens. Specifically, the Legislature has directed the Arts Board to:

- Continually study the artistic and cultural activities within the state.
- Assist arts activities in the state.
- Assist communities in creating and developing their own arts programs.
- Plan and implement funding programs for groups or individuals engaged in the arts.

In carrying out these responsibilities, the Arts Board acts as both a funding agency providing financial support to the arts and a service agency promoting communication and information about the arts.

As a funding agency, the Arts Board assists arts projects and individual artists through five funding programs: general grants, individual artists fellowships, community arts development, artists-in-residence, and special projects/special programs. Together these programs help support all the arts in Wisconsin, including music, dance, theatre, visual arts, architecture/environmental design, creative writing and film.

As a service agency, the Arts Board promotes the interests of Wisconsin's artists and arts community through an informational program which includes workshops, conferences, research projects, and publications.

At the head of the agency is a 12 member Board which is responsible for agency policy and for final review and decisions on all applications for funding. Appointed to three-year terms by the Governor, members of the Board serve on a voluntary, non-salaried basis. An Executive Director administers the Arts Board's eight person staff which is responsible for carrying out policies approved by the Board.

To assist in the evaluation of funding requests, the Board appoints panels of arts professionals who are recognized experts in their fields to review the applications and make recommendations on each proposal's artistic quality and merit.

MEMBERS OF THE BOARD

1977

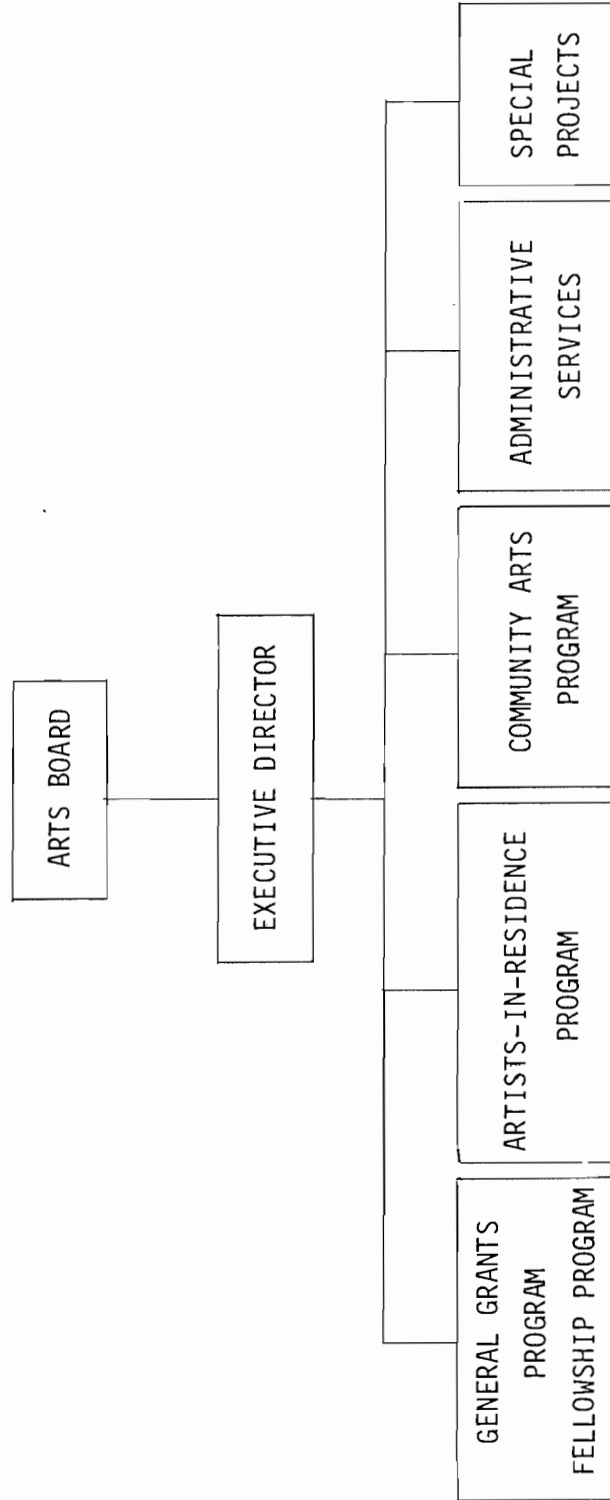
Joel Skornicka
Sandra Utech
Velma Hamilton
Russell Farrell
Ruth DeYoung Kohler
William Carroll Replaced by
Adolph Suppan Replaced by
William Kidd Replaced by
Lyn Saxer
Marion Baumann
Mary Alice Wimmer
J. Thomas Finucan

1979

Joel Skornicka
Sandra Utech
Velma Hamilton
Russell Farrell
Ruth DeYoung Kohler
Nancy Callicott
R. Richard Wagner
E. Reid Gilbert
Lyn Saxer
Marion Baumann
Mary Alice Wimmer
J. Thomas Finucan

TABLE OF ORGANIZATION

WISCONSIN ARTS BOARD
TABLE OF ORGANIZATION



REPORT FROM THE EXECUTIVE DIRECTOR

In its first six years, the Wisconsin Arts Board worked to develop programs and support systems which would fulfill its mandated responsibilities. With that task largely accomplished, the Board in the 1977-79 biennium directed its efforts to expanding the state's arts resources and the public's awareness of those resources. A contributing factor in the success of these expansion efforts during the biennium was the appropriation of state funds for the direct support of arts activities. For the first time since the Board's creation in 1973, Wisconsin's citizens and artists saw a direct link between their state tax dollars and their participation in the arts.

Combined with increased support from the National Endowment for the Arts, the new state funds for arts activities allowed the Board to increase the number of grants awarded under its major funding programs. Through the General Grants Program, the Arts Board supported a greater diversity of artists, a wider range of arts activities and arts organizations, and several arts projects of state-wide significance. With the additional funds, the Community Arts Program assisted local arts groups to develop quality arts experiences and effective local support mechanisms. The new state funds also served as a catalyst to encourage rural schools to participate in the Board's Artists-in-Residence Program which places professional, working artists in Wisconsin schools and learning centers.

In keeping with its focus on expanding the public's awareness of the arts, the Arts Board took steps to involve members of the public in its policy and program development process. First, the Board increased its information services, distributing more materials about arts programs and resources to more people around the state. Second, the Board actively sought the views of citizens through public meetings held in Green Bay and Stevens Point. Through input generated by these meetings and our public information efforts, the Arts Board has developed a better understanding of the role of the arts in Wisconsin and of the importance of supporting community arts organizations and local artists. Finally, the Arts Board worked to inform both the public and agency grantees about section 504 regulations of the 1973 National Rehabilitation Act through materials and advice on the development of arts programs accessible to the handicapped.

For the 1979-81 biennium, the Arts Board plans a thorough review of current funding policies and procedures and will do a timely study to assess the state's arts needs. With the resulting information, the Board can then determine the most effective means of serving both Wisconsin's arts producers and its arts public. Through steps such as these, it is the Board's goal to create and sustain an environment that perceives artistic creativity as a social achievement.

GENERAL GRANTS PROGRAM

The 1977-79 biennium was another period of significant growth for the Arts Board's General Grants Program. In this, the first period in which state GPR funds were available for grants distribution, the program was able to increase the number of arts projects receiving support by 40%, from 208 to 292. Demand, however, continued to outdistance available funds; during the biennium less than 20% of the dollars requested by applicants were available for grants.

Available funds allowed the General Grants Program to support projects that brought Wisconsin increased access to high quality arts events (including statewide tours by Wisconsin's premier arts organizations), supported sustained creative work by the state's outstanding artists (including 19 individual artist fellowship awards), and encouraged the further development of Wisconsin's local arts resources.

Among the program's specific objectives for the 1977-79 biennium were to increase the geographic distribution of its grants awards and the total audience reached by program supported projects. Both objectives were solidly attained: increased funding allowed the General Grants Program to increase its number of audience contacts by more than 300%, while 71 of Wisconsin's 72 counties were reached by program supported projects.

Objectives for the 1979-81 biennium include the further refinement of the geographic distribution of grants dollars. New objectives include increasing the percentage of Arts Board funded pilot projects that become ongoing programs independent of state support.

COMMUNITY ARTS PROGRAM

Begun in 1976 as a pilot program, the Community Arts Program is now an integral part of the Arts Board's efforts to provide all Wisconsin citizens with local access to the arts. Through the program, the Arts Board awards matching grants to community arts organizations either for the support of local arts activities administered by the organization or for the development of the organization itself.

A large part of the program's success in promoting local arts development during the 1977-79 biennium is due to the appropriation of state money to fund the program coordinator's position and to support arts activities.

The additional dollars for community arts grants resulted in the establishment of a second grant category--IMPAC (Integrated Management Program for the Arts in Communities)--in addition to the arts projects category. Through IMPAC, the Arts Board awards matching funds for short term consultancies and specialist led workshops to aid local arts councils in improving their management and programming, needs which the Board's annual survey of local arts groups clearly demonstrated.

Workshops funded by IMPAC grants during the biennium have resulted in several local arts development success stories. An IMPAC workshop in Boscobel on sponsor development reviewed such topics as booking artists, promoting arts events, ticket sales, and publicity. Following that workshop, the Boscobel Arts Council decided to sponsor a performance by Ko Thi, a dance troupe from Milwaukee, and to organize concurrent exhibits of African arts in the library and local stores. In a community of 2,500, over 1,500 people saw the dance company perform and many more saw and enjoyed the art displays.

The Community Arts Council of South Wood County received an IMPAC grant to help increase its individual memberships and corporate contributions to fund local arts programs. The grant was used to bring in a founder of the Milwaukee United Performing Arts Fund to train the Council's board in fundraising methods. Following that training, the Council organized a campaign which raised five times the money they had raised the previous year.

During the course of the biennium, Community Arts Program grants funded a wide range of activities including exhibits, performances, festivals, arts classes, publicity and information services, and staff coordination. For the first time, the program awarded grants to arts groups in Marinette, New Richmond, Richland Center, Menomonie and Hurley. Overall, 34 grants were awarded under the program to arts groups around the state.

During the 1979-81 biennium, the program hopes to build upon these past achievements and develop a solid network of local arts agencies throughout Wisconsin. Specifically, the Arts Board has established the following as objectives for the program during the next biennium:

- The encouragement and support of long range planning, programs and projects which integrate the arts into the local community's social, educational and economic structure.
- The support of efforts which provide citizens with access to the arts and information about the arts.
- The support of public artworks, local artists and arts organizations and arts indigenous to the area.

ARTISTS-IN-RESIDENCE

Through the Artists-in-Residence Program (formerly Artists-in-Schools), the Wisconsin Arts Board awards matching grants to place professional artists in Wisconsin classrooms for periods ranging from one day to a full academic year. In workshops, classes, performances, and exhibits, the resident artists use their skills and talents to involve students in the arts and the artistic process.

As the name change indicates, the program expanded during the 1977-79 biennium to include arts centers with ongoing educational programs as well as the public and private elementary and secondary schools already served. The program also developed in terms of numbers and content. The 148 residencies sponsored during the 1975-77 biennium grew to 178 in the 1977-79 biennium, and these residencies on average were for longer periods of time. In addition, the program expanded to include the performing arts and storytelling with a 10% cash match incentive used to encourage theatre and dance residencies.

Some of the highlights of the program over the past two years are outlined below.

- During a nine-month visual arts residency at Marquette University High School, students painted two large hall murals and worked with the artist to set up a gallery in the school basement to exhibit both student and faculty art work.
- During a joint residency in River Falls, students worked with creative drama specialist Gary Parker and the Metro Circus Theatre from St. Louis, Missouri, to develop their own dramatic skills and at the same time see professionals at work.
- In four one-day storytelling residencies in elementary schools, Lorna Balian, a writer and illustrator for children's books, showed 1,600 children how entertaining stories are created.
- The Wausau Performing Arts Foundation sponsored a special ten-week creative writing residency for students from the northwoods, an area of the state which usually offers fewer cultural activities than the southern or more urban areas.
- Roberta Hill, a Native American poet, worked with the Oneida Tribe on a year-long interdisciplinary project involving rhythm exercises, language play, drawing, and painting. Ms. Hill utilized the talents of several guest artists to enrich the residency including Robert Penn, a Native American painter and printmaker, Bruce Wynne, a Native American sculptor, and Echohawk, a Native American theatre group.

- Sarah Balbin, a painter, taught drawing and painting in Native American schools and at the same time produced portraits of six tribal elders. As she painted their portraits, the elders recorded the history of the tribe on audiotapes which then accompanied the portraits on a touring exhibit.

A total of 30,175 students benefited from the Artists-in-Residence Program during the 1977-79 biennium. Of those, 14,904 were able to work closely with an artist in workshops or special classes on a regular basis. The remaining 15,271 students had the opportunity to see and hear "real" artists--perhaps for the first time--in performances, readings, and lectures.

As the program continues to grow, so does its popularity in Wisconsin's schools. At the present time, requests for residencies far exceed available money. Schools are asking for longer residencies and additional assistance from the Arts Board in setting up and implementing residencies. To meet these demands, the Arts Board has established the following goals for the Artists-in-Residence Program for the 1979-81 biennium.

- Emphasis will be placed on residencies which offer students "in-depth" contact with the resident artists (in-depth contact is defined as three or more meetings with an artist in one week). From the Board's experience, such residencies have a longer and more lasting impact on the school, its faculty, and students.
- To assist sponsors with the planning and implementation of successful residencies, the Board plans to host an annual sponsor orientation conference and to increase the number of on site visits by Arts Board staff members.
- To further promote arts education, the Board plans to encourage sponsoring schools to integrate the artist's activities into all areas of the school's curriculum.
- To continue to work closely with the Department of Public Instruction to increase the number of schools participating in the program.

SPECIAL PROJECTS/SPECIAL PROGRAMS

I. CHILDREN'S PROGRAM, MILWAUKEE

In conjunction with the Faye McBeath Foundation, Milwaukee, the Arts Board evaluated selected summer arts activities for children in the Milwaukee area. This evaluation reviewed the educational goals of the summer project and led to a Milwaukee sponsored program placing talented students in summer classes with professional artists.

The Board has had a long-standing interest in supporting the training and education of our state's young artists. By assisting programs like the one in Milwaukee, the Arts Board hopes to provide opportunities by which students can receive guidance and instruction from professional musicians, dancers, painters, photographers, actors, sculptors, and writers.

II. TOURING PROGRAMS, JOINT SPONSORSHIP

The Arts Board belongs to a regional organization comprising the five states of Iowa, Minnesota, North Dakota, South Dakota and Wisconsin. The Affiliated State Arts Agencies of the Upper Midwest has developed many cooperative efforts for expanded use of combined funding and grants from the National Endowment for the Arts. These monies and the cooperation allow the five states to do "block booking" of national and regional tours of dance, theatre, music and mime.

The touring program has presented Wisconsin audiences with performances of the Guthrie Theatre of Minneapolis, the St. Paul Chamber Orchestra, the Alvin Ailey Dance Theatre, the Joffrey II Ballet, and Pilobolus Dance Company. Wisconsin has toured to the other four states performances from the Milwaukee Repertory Theatre, the Ko Thi Dance Company and the Milwaukee Symphony Orchestra. For the next biennium, visual art exhibitions originated by museums in each state will be exchanged among such sponsors as universities, communities, and museums.

III. THE WISCONSIN CONCRETE PARK, PHILLIPS

The Wisconsin Concrete Park has been long recognized as one of the outstanding folk art treasures in the country. Created by Fred Smith of Phillips, the concrete statues had deteriorated due to lack of attention and the harsh northern climate. The Arts Board restored the collection of over 200 individual art pieces using grants from the National Endowment for the Arts, the Anne Marie Foundation, and the Kohler Foundation. In addition, supplies and technical assistance were provided by businesses in the Phillips area and by the Medusa Cement Company and the Sika Corporation.

The site is now a public park owned and operated by Price County. It is one of the first publicly owned, community sculpture parks in the nation. In the next biennium, the Board will identify additional folk art sites in the state. Wisconsin is one of three states in the country that have a sizeable collection of folk art sites, but many of these are in critical need of repair and maintenance. The Arts Board plans to develop an approach and a program for restoring and maintaining these sites for future generations.

IV. WISCONSIN PROJECT FOR ARTISTS

In the summers of 1977 and 1978, the Arts Board undertook one of its most ambitious and unique projects. The agency hired over 75 artists through CETA funding and provided the state with touring theatre, artists in community residencies, and a book, Wisconsin Images.

Working with the Department of Natural Resources, the Arts Board organized a summer theatre tour which reached approximately 30% of the state's public parks and forests. The performances were created from original scripts and reflected themes of interest to Wisconsin. The 1977 summer show portrayed the concerns of the small family farmer in Wisconsin and the 1978 summer show focused on energy. The comments from the thousands of people who saw the performances were overwhelmingly enthusiastic and positive.

As an outgrowth of the summer touring program, the Arts Board and the Department of Natural Resources are developing an annual touring program through which Wisconsin performing arts organizations will tour the state park system.

Also during the biennium, CETA artists worked throughout the state in local communities to produce public works of art for the sponsoring town, city or county. Large ceramic murals were created for La Crosse and Hartford, sculpture in Kiel, Marshfield and Dodgeville, a photographic essay produced in Oshkosh, murals in Rhinelander and Alma, and numerous paintings for places as diverse as Madison and Plymouth. Community acceptance of the works has ranged from excited and pleased to outright hostility, but, as art often goes, it sharpened the aesthetic eye of the local residents.

Although there are no plans to continue the program, process models have been developed and completed to encourage local communities to make use of their public spaces with the talents of their artists.

Produced in 1977, Wisconsin Images culminated the efforts of six writers and three photographers. Aside from providing employment for nine young artists, over 1,000 copies of the book have been distributed locally and nationally.

With the expiration of the CETA funds, the Arts Board has given more emphasis to its grantmaking function for statewide arts services. Through the grants, the agency constantly encourages and supports local efforts to create public art and the statewide touring of Wisconsin's performing arts.

APPENDIX

Grants Awarded by the Arts Board during the 1977-79 Biennium

GRANTEE/PROJECT TITLE
FY 1978

COUNTY LOCATION
OF ACTIVITIES

GRANT
AMOUNT

PROJECT DESCRIPTION

GENERAL GRANTS PROGRAM

ARCHITECTURE & ENVIRONMENTAL DESIGN

MILWAUKEE ART CENTER	Exhibit of architectural artifacts of the famed "Prairie School."	Milwaukee based, toured statewide	\$4,160
PETER BRABBE	Exhibitions of civic sculpture by Wisconsin artists.	Outagamie, Winnebago	\$2,500
CITY OF GREEN BAY/MAYOR'S BICYCLE COMMITTEE	Three exterior murals promoting biking and bicycle safety.	Brown	\$ 950
UNIVERSITY OF WISCONSIN-STEVENS POINT FOUNDATION, INC.	An 8000 foot mosaic mural.	Portage	\$1,000

CREATIVE WRITING

ROCKIE TAYLOR	Completion of a collection of essays, stories, poetry and plays.	Milwaukee	\$1,400
MICHAEL TARACHOW FOR PENTAGRAM PRESS	Publication of a new book by Richard Kostelanetz.	Milwaukee	\$1,650
KAREN A. SNIDER	Collection of poems on the life of a woman artist.	Milwaukee	\$ 600
RON ELLIS	Epic narrative poem concerning the educational experience.	Jefferson	\$ 850
DAVID W. CLEWELL	Collection of poems to be released by Chowder Review.	Dane	\$1,500
STEVEN KENT MILLER	Publication of a bi-annual literary magazine.	Dane, released regionally	\$ 900
FROM THE BOTTOM PRESS, DENNIS TRUDELL, EDITOR	An anthology of writings by inmates at Wisconsin State Prison-Waupun.	Dane, Fond du Lac, released statewide	\$1,300

GRANTEE/PROJECT TITLE	PROJECT DESCRIPTION	COUNTY LOCATION OF ACTIVITIES	GRANT AMOUNT
ROBERT J. DRIES	Completion of a new play.	Dane	\$ 720
THE CHOWDER REVIEW RON SLATE, EDITOR	Three chapbooks by poets Leonard Nathan, Ronald Wallace and Carolyn Forche.	Dane, chapbooks released statewide	\$ 800
TONY HOZENY	Continue work on <u>Last Warning</u> , a novel.	Dane	\$1,000
J.D. WHITNEY	Completion of collection of quotations about the process of writing.	Dane, to be released nationally upon publication.	\$1,200
WESTERN WISCONSIN REGIONAL ARTS	Writer-in-residence project for senior citizens in nursing homes.	Crawford, Juneau, La Crosse, Monroe, Trempeleau, Vernon	\$ 420
JERALD BULLIS	Completion of a collection of 100 poems.	Outagamie	\$2,000
JOHN BARROW	Complete re-write of recent novel.	Winnebago	\$ 600
<u>1978 FELLOWSHIPS:</u>			
CHRISTINE ZAWADIEWSKY	Five Wisconsin writers were awarded \$2,000 fellowships in 1978.	Dane, Douglas, Milwaukee, Outagamie	\$10,000
RAY SMITH	Poetry		
JAMES CORTESE	Poetry		
HOWARD WAXMAN	Writing		
RICHARD FRANCE	Play wrighting		
	Play wrighting		
<u>DANCE</u>			
BALLET FOUNDATION OF MILWAUKEE, INC.	Performances of the Milwaukee Ballet with live orchestra.	Kenosha, Marathon, Milwaukee	\$6,967
KO-THI DANCE CO., INC.	Eight-performance tour of African dance.	Door, Milwaukee, Rock, Sheboygan, Waukesha, Winnebago	\$2,000
BAUER DANCE ENSEMBLE (VIA EAST SIDE PERFORMERS WORKSHOP)	Development of an integrated live dance/video project.	Milwaukee	\$2,500

GRANTEE/PROJECT TITLE

PROJECT DESCRIPTION

COUNTY LOCATION
OF ACTIVITIESGRANT
AMOUNT

DANCECIRCUS, LTD.

Residency/performance tour of schools and communities.

\$2,020

Brown, Calumet, Dane, Fond du Lac, Jackson, La Crosse, Manitowoc, Marathon, Milwaukee, Outagamie, Portage, Racine, Waukesha, Washington, Winnebago

DANCECIRCUS, LTD.

Experimental project to bring dance into such work areas as factory lunchrooms and shopping centers.

\$ 275

Milwaukee

DANCECIRCUS, LTD.

Guest choreographer Katherine Zavada for a dance series based on Edgar Lee Masters' Spoon River Anthology.

\$ 250

Dane, Jackson, La Crosse, Milwaukee

MT. SENARIO COLLEGE

Dance and video project based on American Indian cultures and performed by native American dancers.

\$2,200

Barron, Burnett, Oneida, Rusk, Sawyer, Washburn

FILM

KENOSHA PUBLIC MUSEUM

Film production workshop for children.

\$ 750

Kenosha

GREAT LAKES FILM FESTIVAL

Second annual film festival featuring Great Lakes filmmakers.

\$1,500

Dane, Milwaukee

JAMES BENNING

Completion of a 16mm sound/color experimental film.

\$1,200

Milwaukee, being shown nationally

DENNIS DARMEK/PAUL FIX

Documentary of contemporary Haitian art for PBS.

\$2,000

Milwaukee, released statewide

WHA TELEVISION/UNIVERSITY
OF WISCONSIN-EXTENSION

Production of three plays by Wisconsin playwright Thornton Wilder for PBS.

\$1,000

Statewide and national viewing audiences

MICHAEL P. WENZEL

Whimsical animated film for children.

\$1,200

Buffalo, Trempeleau

GRANTEE/PROJECT TITLE	PROJECT DESCRIPTION	COUNTY LOCATION OF ACTIVITIES	GRANT AMOUNT
<u>INTERDISCIPLINARY</u>			
ARTREACH MILWAUKEE, INC.	Arts programming for hospitals, extended care facilities and institutions.	Milwaukee	\$2,500
COUNCIL FOR THE SPANISH SPEAKING	Arts experiences for Spanish speaking Wisconsinites.	Dane, Kenosha, Milwaukee, Ozaukee, Racine, Sheboygan, Waukesha, Winnebago	\$1,000
GREATER MILWAUKEE COUNCIL OF THE ARTS FOR CHILDREN	Arts festival for the handicapped.	Eau Claire, Milwaukee	\$1,000
JOURNEY HOUSE, INC.	Arts awareness program in a multi-cultural low income area of Milwaukee.	Milwaukee	\$ 240
URBAN DAY SCHOOL	Arts curriculum for an experimental alternative school.	Milwaukee	\$1,000
MILWAUKEE INNER CITY ARTS COUNCIL	Artist fees for inner city arts celebration.	Milwaukee, state-wide and regional audience	\$ 750
FOLKLORE VILLAGE FARM, INC.	Sponsorship of Grythyttans Swedish dancers at Midsummer festival.	Dane, Green, Iowa	\$ 450
COLONIAL CLUB, INC.	Series of fine arts workshops and classes for senior citizens.	Dane	\$1,000
DANE COUNTY ARTS COUNCIL CHILDREN'S ARTS COMMITTEE	Music, theatre, magic and clowning workshops.	Dane	\$ 400
GARVIN GORDON/ROBERT ISRAEL	Production of radio play.	Columbia, Dane, Iowa, Sauk	\$1,687
WISCONSIN INSTITUTE FOR INTERMEDIA STUDIES	Artist fees for multi-arts festival.	Dane, Iowa, Sauk, Jefferson, Rock	\$1,565
WISCONSIN EDUCATIONAL COMMUNICATIONS BOARD	State Airing of "Art America," a national series of fine arts programs.	Statewide coverage	\$2,000

UNITARIAN DANCE FELLOWSHIP OF MADISON	Workshop on creative dance.	Dane, Kenosha, La Crosse, Portage, Rock	\$ 175
MEMORIAL UNION BUILDING/DANE COUNTY CULTURAL AFFAIRS COMMISSION	Artistic residencies in county schools.	Dane	\$2,000
DOMINICAN EDUCATION CENTER	Introductory arts performances in rural area.	Dane, Grant, Green, Iowa, Lafayette	\$ 600
GREAT RIVER FESTIVAL OF THE ARTS	Festival publicity.	Jackson, LaCrosse, Monroe, Trempeleau, Vernon	\$2,000
WILLIAM TECKU, PRODUCER	Honoraria for ten-part series of radio poetry readings.	Ashland, Bayfield, Burnett, Douglas, Sawyer, Washburn	\$1,350
<u>MUSIC</u>			
KENOSHA SYMPHONY ORCHESTRA ASSOCIATION	Residency by cellist Ronald Thomas.	Kenosha	\$1,050
MILWAUKEE SYMPHONY ORCHESTRA	State tour to ten Wisconsin communities.	Eau Claire, Fond du Lac, La Crosse, Marthon, Oneida, Rusk, Portage, Winnebago, Wood	\$30,500
MILWAUKEE SYMPHONY ORCHESTRA	Operational costs.	Milwaukee, statewide impact	\$50,000
GREGORIA SUCHY	Completion and recording of her works.	Milwaukee	\$ 500
SULLIVAN CHAMBER ENSEMBLE	Ensemble and chorus tour.	Dane, Fond du Lac, Racine	\$1,000
WISCONSIN CONTEMPORARY MUSIC FORUM	Eight-concert tour of contemporary music.	Milwaukee, Sheboygan, Winnebago	\$1,000

GRANTEE/PROJECT TITLE PROJECT DESCRIPTION OF ACTIVITIES AMOUNT

WOODWIND ARTS QUINTET	Chamber music tour.	Kenosha, Manitowoc, Milwaukee, Washburn	\$1,750
YEHUDA YANNAY	Composition of theatrical vocal drama featuring singer/actress Lee Dougherty, premiered in Milwaukee and New York.	Milwaukee	\$ 700
BEDFORD DUO	School tour by oboe and harpsichord duo.	Kenosha, Milwaukee, Racine	\$ 598
SYMPHONY OF THE HILLS SYMPHONY SCHOOL OF AMERICA	Guest artists for educational summer symphony.	Crawford, Grant, Iowa, La Crosse, Sauk, Lafayette, Monroe, Richland, Vernon	\$ 800
NORTHERN WISCONSIN BAROQUE MUSIC FESTIVAL	Part-time festival promotion director.	Lincoln, Marathon, Oneida, Vilas	\$1,000
MONROE PARK BOARD/SYMPHONY FRIENDS OF GREEN COUNTY	Monroe area audiences development for Symphony of the Hills.	Green, Lafayette, Rock, Sauk	\$ 500
HARMONY OF THE SPHERES (VIA CREATIVE EDUCATION CENTER)	School/community experimental music workshop tour.	Columbia, Dane, Milwaukee, Sauk, statewide conference	\$1,000
MADISON RECORDER CONSORT	English Renaissance guest conductor, Stanley Boorman.	Dane, Green, Lafayette	\$1,750
WISCONSIN EDUCATIONAL COMMUNICATIONS BOARD	Simulcast of five live Milwaukee Symphony concerts.	Statewide coverage	\$1,786
WISCONSIN CHAMBER ORCHESTRA	Part-time manager.	Dane	\$1,500
WISCONSIN YOUTH SYMPHONY	Three youth symphonies tour of Wisconsin schools, communities and correctional institutes.	Dane, Jefferson, Sheboygan, Walworth, Washington, Waukesha	\$2,500
CENTRAL CHAMBER CHORALE	Professional instrumental support for <u>King David</u> .	Clark, Marathon, Portage, Wood	\$ 255
FRIENDS OF THE PAINE ART CENTER	Chamber performances at the Paine Art Center.	Brown, Fond du Lac, Green Lake, Marquette, Milwaukee, Outagamie, Washington, Waushara, Winnebago	\$ 500

COUNTY LOCATION
OF ACTIVITIES

GRANT
AMOUNT

PROJECT DESCRIPTION

GRANTEE/PROJECT TITLE

FOND DU LAC COMMUNITY BAND	Paid principals for summer season.	Dodge, Fond du Lac, Winnebago	\$2,740
DULUTH-SUPERIOR SYMPHONY ORCHESTRA	Program using orchestra principals in Superior public schools.	Douglas	\$1,165
<u>THEATRE</u>			
MILWAUKEE REPERTORY THEATRE	Tour of <u>The Portable Play</u> to institu- tions, nursing homes and hospitals.	Milwaukee	\$3,500
THEATRE X, INC.	Administrative assistant.	Milwaukee	\$5,200
FRIENDS MIME THEATRE	Workshops and performance tour to com- munities and institutions.	Kenosha, Manitowoc, Milwaukee, Ozaukee, Portage, Sheboygan Waukesha	\$3,500
RACINE THEATRE GUILD	Technical director.	Kenosha, Milwaukee, Racine	\$3,000
VALLEY STUDIO, INC./ WISCONSIN MIME THEATRE	Premiere production by playwright Howard Waxman.	Dane, Sauk	\$1,000
VALLEY STUDIO, INC./ WISCONSIN MIME THEATRE	Residency tour workshops and performances	Dane, Green, Mil- waukee, Portage, Sauk, Sheboygan, Waukesha, Winnebago	\$2,000
KINDER IN A DRAMATIC SOCIETY, INC.	Audience participation shows to South- central and Southwest Wisconsin schools.	Columbia, Dane, Dodge, Fond du Lac, Green, Iowa, Jefferson Lafayette, Richland, Rock, Sauk	\$2,000
KINDER IN A DRAMATIC SOCIETY, INC.	School performance tour to new sites.	Crawford, Dane, Dodge, Grant, Green, Iowa, Jefferson, Juneau, Lafayette, Richland, Sauk	\$1,500
MADISON CIVIC REPERTORY THEATRE	Professional designer/technical director.	Dane	\$3,000

SHAKESPEARE IN THE BACKYARD, INC.	Innovative program of children's theatre.	Dane	\$ 500
TONI PRESS	Completion and production of new play.	Dane	\$ 825
UNIVERSITY OF WISCONSIN-EXTENSION	Midwest Playwrights Workshop.	Statewide and regional impact	\$4,000
WISCONSIN THEATRE ASSOCIATION	Conference performance fees and printing of statewide directory.	Statewide impact	\$ 900
WISCONSIN THEATRE ASSN./ARTS SERVICES ASSOCIATES	Computerized booking program.	Statewide impact	\$2,000
PENINSULA PLAYERS THEATRE, INC.	Internship program at summer theatre.	Door	\$1,500
WISCONSIN TOURING THEATRE	Summer theatre to rural communities.	Crawford, LaCrosse, Monroe, Richland, Vernon	\$2,800
WISCONSIN TOURING THEATRE	Audience preparation.	Crawford, LaCrosse, Monroe, Richland, Vernon	\$1,400
WISCONSIN TOURING THEATRE	Summer tour.	Crawford, LaCrosse, Monroe, Richland, Vernon	\$31,500
<u>VISUAL ARTS</u>			
GARY JOHN MARX	Ceramic sculpture pieces for exhibit.	Sheboygan	\$1,200
ANNE C. ZEMBZ	Five large woven wall hangings.	Sheboygan	\$1,000
FRED BERMAN	Series of 35mm color photographs studying multiple images.	Milwaukee	\$1,000
JOHN BALSLEY	"Found Object Sculpture"	Milwaukee	\$1,700
ROBERT BURKERT	Four Wisconsin landscape serigraphs.	Milwaukee	\$1,000
ROBERT D. CURTIS	Experimentation on welding dissimilar metals for sculpture pieces.	Milwaukee	\$1,000

GRANT PROJECT TITLE	PROJECT DESCRIPTION	COUNTY LOCATION OF ACTIVITIES	AMOUNT
FRANCES MYERS	Series of aquatints studying the architecture of Frank Lloyd Wright.	Iowa	\$1,000
WARRINGTON COLESCOTT	Completion of series, "History of Printmaking."	Iowa	\$1,000
KAREN T. MASSARO	New directions in linear clay painting surfaces.	Dane	\$ 500
RICHARD LONG	Creation of modern Christian iconography utilizing mixed media.	Dane	\$ 614
DAVID GRAY	Use of new materials with traditional sculptural materials.	Dane	\$ 750
ARTPLACE/CENTER GALLERY	Display glass for exhibition.	Dane	\$ 463
MADISON ART CENTER	Catalogue for exhibition Santos Zingale.	Dane, distributed statewide.	\$1,000
MADISON ART CENTER	Mobile children's art exhibit "King Toot" featuring "pop" Egyptian images.	Dane, statewide tour.	\$2,000
ROGER ANDERSON	Hand-printed art book of photo-serigraphs.	Dane	\$ 500
RONALD UDY	Increasing scale to full-wall size works.	Dane	\$ 725
ELVEHJEM ART CENTER	Brochure introducing art collecting.	Dane, distributed statewide.	\$1,000
JAMES A. PERNATTO	Series of prints with handmade paper.	Dane	\$1,125
FREIDA HIGH	Touring exhibition and lecture series to area schools.	Dane, regional television exposure.	\$1,898
DAVID WILLARD	Methods of glass melting for molding and blowing.	Dane, demonstrated regionally.	\$1,800
WISCONSIN ART EDUCATION ASSOCIATION	Children's artworks exhibited at State Capitol during Youth Art Month.	Dane, Douglas, Eau Claire, Marathon, Milwaukee, Winnebago	\$ 800

GRANTEE/PROJECT TITLE	PROJECT DESCRIPTION	COUNTY LOCATION OF ACTIVITIES	GRANT AMOUNT
STEVEN SPIRO	Series of functional wood designs.	Outagamie	\$ 750
DOROTHY DONOHUE	Fine art illustrations for children's book.	Winnebago	\$1,000
TOM STROBEL	Cooperative print workshop.	Crawford, Grant, Richland	\$1,000
<u>1978 FELLOWSHIPS:</u>	Five Wisconsin visual artists were awarded \$2,000 fellowships in 1978.		
ANITA WIEDENHOEFT-WESLER	Metalwork	Dane, Fond du Lac,	\$10,000
RICHARD BLAU	Photograph	Jefferson, Milwaukee,	
WALTER K. MORRIS	Metalwork	Portage	
WALLY E. PEETS	Painting		
DAVID BUEHRENS	Sculpture		
<u>TECHNICAL ASSISTANCE & CHAIRPERSON'S ACTION GRANTS</u>			
WISCONSIN FINE ARTS ASSOC.	Promotional advisor and planner.	Statewide	\$ 500
WISCONSIN LUNG ASSOCIATION	Seminar on health hazards in the arts.	Milwaukee	\$ 500
MILWAUKEE OPERA	Administrative advisors for planning and promotion.	Milwaukee	\$ 500
ROUND RIVER SOCIETY	Seed funds for introductory issue.	Statewide distribution.	\$ 500
UNIVERSITY OF WISCONSIN-EXTENSION	Video tape on American indian art and dance.	Statewide distribution.	\$ 500
WISCONSIN UNION THEATRE	Simulcast of Emanuel Ax concert.	Statewide simulcast	\$ 500
VICKEY HERMAN	Documentary film script on the National Theatre of the Deaf filmed by WHA-TV.	National distribution,	\$ 500
APPLETON REPERTORY THEATRE	Promotion and planning workshop.	Outagamie, Winnebago	\$ 150

GRANTEE/PROJECT TITLE
FY 1979

PROJECT DESCRIPTION

COUNTY LOCATION
OF ACTIVITIES

GRANT
AMOUNT

GENERAL GRANTS PROGRAM

CREATIVE WRITING

GEORGINA JO RESSMEYER	Completion of novel.	Milwaukee	\$2,650
LEWIS B. RANDALL	Collection of native poetry using scenes and images.	Dane, Iowa, Richland, Bayfield	\$ 750
ROUND RIVER SOCIETY	Editorial honoraria for publication of <u>Round River</u> .	Statewide	\$ 500
JAMES STEPHENS	Poetry anthology addressed to jazz musicians.	Statewide	\$2,000
JOHN RODERICK CLARK	Writing a new play.	Dane	\$ 500
RICK PENN/DAVID KUBACH	Anthology of poems by seven Lake Superior poets.	Statewide	\$1,000
JOHN BORROW	Writing of <u>Outward Bondage</u> , a new play.		\$1,200
FRIENDS MIME THEATRE/BOOX INC.	Emergency funds for rent.	Milwaukee	\$ 250
<u>CREATIVE WRITING FELLOWSHIPS</u>	Four Wisconsin writers were awarded \$2,000 fellowships in 1979.		
CHRISTINE ZAWADIWSKY	Poetry	Milwaukee	\$2,000
RONALD WALLACE	Poetry	Madison	\$2,000
HOWARD WAYMAN	Playwriting	Madison	\$2,000
SUSAN FIRER	Poetry	Milwaukee	\$2,000

DANCE

DANCECIRCUS LTD.	Videotape of company's repertoire.	Milwaukee	\$ 480
DANCECIRCUS LTD.	Tour of "Modern Dance is . . ."	Waukesha, Jefferson, Fond du Lac, Jackson, Outagamie, Shawano	\$1,375

PROJECT DESCRIPTION

GRANTEE/PROJECT TITLE

GRANTEE/PROJECT TITLE	PROJECT DESCRIPTION	COUNTY LOCATION OF ACTIVITIES	GRANT AMOUNT
KANOPIY DANCE TEHATRE	Public relations, audience development.	Waukesha, Jefferson, Fond du Lac, Jackson, Outagamie, Shawano	\$ 480
KANOPIY DANCE THEATRE	Library tour of the solo concert, "Self-Portrait."	Dane, Sauk, Green	\$ 525
MEMORIAL UNION BUILDING	Nikolais Dance Company residency.	Dane	\$3,750
MID-AMERICA DANCE COMPANY	Salary assistance.	Racine, Waukesha, Milwaukee	\$6,400
KO THI DANCE COMPANY	Tour.	Dane, Ozaukee, Rock, Walworth, LaCrosse, Racine	\$6,440
APPLETON GALLERY OF ARTS FOR AH-KE-NE-BA-WAE DANCE & LECTURE GROUP	Administrative consultancy by Dr. James Lawless.	Outagamie	\$ 650
<u>FILM</u>			
DANA GORDON	Experimental film.	Milwaukee	\$2,000
GREAT LAKES FILM FESTIVAL	Film fesitval.	Dane, Milwaukee	\$1,500
EAST SIDE PERFORMER'S WORKSHOP	Perihelion Photographic Gallery.	Milwaukee	\$1,000
BETTY GORDON	16mm film "Exchanges."	Milwaukee, Dane	\$1,000
COMMUNITY ACTION ON LATIN AMERICA	Documentary film on confrontation between Chippewa Indians and Exxon Corp.	Madison	\$2,500
PAUL MARCUS	16mm film on industry steelworkers.	Dane, Waupaca	\$2,500
WI EDUCATIONAL COMMUNICATIONS BOARD	Two-part TV documentary on Vietnam anti-war movement.	Statewide	\$1,500
CHUCK FRANCE/KATHLEEN IATTARELLI	Thirty-two minute documentary on the differences between jazz audiences in the U.S. and in Europe.	Dane	\$1,000
BARRY W. STONER	Dramatic-comic film about a writer who sits down to write "the great American novel."	Door, Brown	\$2,786
KICKAPOO VALLEY ASSOCIATION	16mm film depicting cultural heritage of the Kickapoo River Valley.	Crawford	\$1,000

COUNTY LOCATION
OF ACTIVITIES

PROJECT DESCRIPTION

GRANTEE/PROJECT TITLE

GRANT
AMOUNT

INTERDISCIPLINARY

ARTREACH MILWAUKEE

Milwaukee, Racine,
Washington, Ozaukee,
Waukesha \$3,000

Service expansion.

DENNIS DARMEK/PAUL FIX

Milwaukee, Dane, Sheboygan \$2,150

Film depicting the creative process of
four established dance companies of
southeast Wisconsin.

MILWAUKEE PUBLIC LIBRARY

Milwaukee \$1,000

Giving small press titles feature exposure
in 14 branch libraries.

RACINE ART ASSOCIATION/
RACINE ART GUILD

Racine, Milwaukee,
Kenosha, Walworth \$ 475

Guthrie Theatre touring costume and
prop exhibit.

FOLKLORE VILLAGE FARM INC.

Iowa, Grant, Milwaukee,
Dane, Richland \$3,000

Tour of public institutions with dance,
music, storytelling, games and crafts.

RICHLAND MUSEUM

Richland \$2,550

Outreach program.

CENTRAL MADISON COUNCIL

Dane \$1,500

Equinox Festival.

CENTRAL MADISON COUNCIL

Dane \$ 500

Equinox Festival segment, "The Meeting."

DANE COUNTY ARTS COUNCIL

Dane \$ 900

Mainstream Art Project.

BACK PORCH RADIO, INC.

Dane \$1,500

Three original plays written for WORT-FM.

LAURA BROOKS

Dane \$1,500

Music for UW Clinical Health Sciences
center lobby.

WI WOMEN IN THE ARTS

Statewide \$ 370

Membership promotional brochure.

FRIENDS OF THE WAISMAN CENTER

Dane \$1,000

Art for the Handicapped Workshop.

MEMORIAL UNION BUILDING ASSOC.

Dane \$1,500

Performers Artists-in-Residence Program.

CITY OF MADISON

Statewide \$ 391

National Federation of Local Cable Producers
Convention audiotape.

UW-PLATTEVILLE

Grant \$ 500

Regional conference for writers.

ARTSPEOPLE-WEST C.A.P.

Dunn, Pierce \$1,100

Street Circus tour.

GREAT RIVER FESTIVAL OF ARTS, INC.

LaCrosse, Vernon \$1,300

Support of festival.

YOUNG ADUIENCES OF WISCONSIN

Statewide \$1,000

Programming for student and teacher work-
shops, special education and minority groups.

MUSIC

KENOSHA SYMPHONY ASSOCIATION UW-MILWAUKEE/DEPT. OF MUSIC	Artists-in-Residence Program, violinist. Music in World Culture, Eastern and Western ethnic music.	Kenosha Milwaukee	\$1,050 \$3,000
WI CONTEMPORARY MUSIC FORUM	Concerts introducing new compositions by Wisconsin composers.	Outagamie, Portage, Kenosha, Walworth, Sheboygan, Milwaukee	\$2,000
MILWAUKEE SYMPHONY ORCHESTRA	Touring; operational support; statewide telecasts.	Statewide	\$50,000
MILWAUKEE REPERTORY THEATER	School tour of "Villainous Company," program of Shakespearean material.	Milwaukee, Jefferson, Racine, Waukesha, Sheboygan, Ozaukee	\$10,000
MILWAUKEE BALLET COMPANY	Tour/residency of <u>The Nutcracker Suite</u> and other works.	Winnebago, Walworth, Fond du Lac, Rusk	\$16,600
NEWBERRY BRASS QUINTET	Statewide concert tour.	Statewide	\$1,600
BACH CHAMBER CHOIR & ORCHESTRA	Hiring Assistant Conductor and musicians.	Milwaukee, Racine	\$2,400
ADELE BOROUCHOFF/PATRICIA NELSON	Opera performance/informance tour.	Milwaukee, Rock, Dane Kenosha, Winnebago	\$ 300
JAMES D. PEASE	Composition of work for voices, orchestra and electronic media.	Milwaukee	\$ 500
SULLIVAN CHAMBER ENSEMBLE, INC.	Technical assistance.	Milwaukee	\$2,500
WOODWIND ARTS QUINTET FOUNDA. INC.	Tour, performance and workshops.	Statewide	\$1,000
WISCONSIN CHAMBER PLAYERS, INC.	Public TV documentary of community residency.	Milwaukee	\$2,495
RACINE SYMPHONY ORCHESTRA ASSOC.	Seminar.	Racine	\$ 75
RACINE SYMPHONY ORCHESTRA ASSOC.	Joint concert with Kenosha Symphony and area choruses.	Kenosha, Racine	\$1,000
NORTHERN WISCONSIN BAROQUE MUSIC FESTIVAL	Festival coordinator.	Vilas, Oneida	\$ 750
SYMPHONY OF THE HILLS	Guest arrangers.	Iowa, Richland, Green	\$ 850
SYMPHONY OF THE HILLS	Chamber Music Project.	Iowa	\$1,000
MONROE PARK BOARD	Audience development workshop.	Green	\$ 500



GRANTEE/PROJECT TITLE	PROJECT DESCRIPTION	COUNTY LOCATION OF ACTIVITIES	GRANT AMOUNT
MONROE ARTS AND ACTIVITIES CENTER	Community concert by pianist Marylene Dosse.	Green	\$ 400
MADISON BOYCHOIR	Administrative salary assistance.	Dane	\$1,500
MADISON CIVIC MUSIC ASSOCIATION	Madison Symphony Orchestra concert in Baraboo.	SAUK	\$ 850
WISCONSIN CHAMBER ORCHESTRA, INC.	Performances and workshops in four rural communities.	Dane	\$2,000
ENCORE OF MADISON, LTD.	Original composition based on Beowulf epic.	Dane	\$1,000
WINGRA WOODWIND QUINTET	Concert tour.	Langlade, Lincoln, Price, Oneida, Forest	\$ 750
WISCONSIN YOUTH SYMPHONY ORCHESTRA	Concert tour.	Dane, Manitowoc, Dodge, Jefferson, Green	\$1,500
DONALD A. STRACHAN	Concert tour for "Earth Music, a Jazz Fantasy, 17 new Afro-American compositions.	Dane	\$ 500
GREEN BAY SYMPHONY	Youth Symphony program.	Manitowoc	\$1,000
GREEN BAY SYMPHONY	Concert tour.	Brown	\$1,000
CENTRAL CHAMBER CHORALE	Two performances of Bach's <u>St. John Passion</u> .	Wood	\$ 275
PAUL R. KOSOWER	Concert tour of cellist and pianist.	Bayfield, Winnebago, Oconto, Dunn, Wood, Waukesha, Sheboygan, Rusk, Eau Claire	\$1,500
FRIENDS OF THE PAINE <u>THEATER</u>	Winter music program.	Winnebago, Outagamie, Fond du Lac, Green Lake	\$ 600
SHEBOYGAN COMMUNITY PLAYERS	Shakespearean Theater Seminar; Production <u>Romeo and Juliet</u> .	Sheboygan	\$2,000
MILWAUKEE PAC	Festival of American Mime on tour.	Milwaukee, Iowa, Dane, Jefferson, Waukesha	\$5,000
THEATER X, INC. FOR RIC GRUSCZYNSKI	Tour.	Statewide	\$2,000
THEATER X, INC.	Commission of two original works.	Milwaukee	\$1,500
THEATER X, INC.	Salary assistance.	Milwaukee	\$2,600

GRANTEE/PROJECT TITLE	PROJECT DESCRIPTION	OF ACTIVITIES	AMOUNT
SKYLIGHT COMIC OPERA, INC.	Tour of <u>The False Gardener</u> , a comic opera by Mozart.	Rock, Calumet, Jefferson, Sheboygan, Washington, Manitowoc, Milwaukee	\$5,100
PEOPLE'S THEATER, INC.	Production of five American and Afro-American plays.	Milwaukee	\$1,500
FRIENDS MIME THEATER/LONDON THEATER WORKSHOP LTD.	Technical assistance.	Milwaukee	\$1,500
FRIENDS MIME THEATER	Performance/workshop tour.	Statewide	\$3,500
FRIENDS MIME THEATER FOR SENIOR CITIZENS THEATER	Program support of Senior Citizens Theater	Milwaukee, Waukesha, Racine, Washington, Ozaukee	\$1,200
WISCONSIN COUNCIL FOR THE SOCIAL STUDIES	Seminar using the play <u>Shadowbox</u> , to address issues of death and dying.	Jefferson	\$ 200
VALLEY STUDIO, INC.	Operating expenses.	Iowa	\$2,000
VALLEY STUDIO, INC.	Emergency funds for unemployment compensation.	Iowa	\$ 729
VALLEY STUDIO, INC.	Mime theater tour; company and solo performances for adults and children.	Statewide	\$10,500
BROOM STREET THEATER	Informational brochure.	Dane	\$ 500
BROOM STREET THEATER	Salary assistance.	Dane	\$3,000
CHILDREN'S THEATER OF MADISON	Summer theater school	Dane	\$2,000
KINDER IN A DRAMATIC SOCIETY (K.I.D.S.)	Thirty-seven touring performances in middle and elementary schools.	Dane	\$1,000
WI THEATER ASSOCIATION FOR ARTISTS' THEATER ALLIANCE	WHA-TV dramatic program featuring the material of Brecht and Eisler.	Dane	\$1,000
MADISON CIVIC REPERTORY THEATER	Salary assistance for designer/technician.	Dane	\$3,000
WISCONSIN THEATER ASSOCIATION	Studio theater exchange between participating Theater Arts Departments.	Dunn, Pierce	\$ 500
PLATTEVILLE SHAKESPEARE FESTIVAL	Support of Shakespeare repertory festival.	Grant	\$1,500
DOMINICAN EDUCATION CENTER (ST. CLARA COLLEGE)	Performance of <u>Shadowbox</u> .	Grant	\$ 250

GRANTEE/PROJECT TITLE	PROJECT DESCRIPTION	COUNTY LOCATION OF ACTIVITIES	GRANT AMOUNT
PENINSULA PLAYERS THEATER FOUNDATION, INC.	Technical assistance, development director.	Door	\$1,000
PENINSULA PLAYERS	Apprentice program.	Door	\$2,640
UNIVERSITY OF WI-SUPERIOR	Touring theater company.	Douglas, Burnett, Price, St. Croix, Marathon, Barron, Lincoln, Rusk, Ashland, Eau Claire, Bayfield, Sawyer, Langlade, Pierce	\$2,500
<u>VISUAL ARTS</u>			
KATHLEEN L. BRIGGS	Wisconsin Idea Quilt--an album quilt combining Wisconsin history and traditional patterns.	Milwaukee, Dane, Waukesha, Jefferson	\$ 100
MILWAUKEE ART CENTER	Emergency funds for Sight 225, a cooperative gallery.	Milwaukee	\$2,000
PAUL CALHOUN & AL BALINSKY	Photographic study/exhibit of the Third Street area of Milwaukee (a black neighborhood).	Milwaukee	\$2,000
JOHN BALSEY	Creation of a series of sculptures featuring machine images in precarious balance.	Milwaukee	\$1,000
DIANE F. BALSLEY	Individual watercolors for gallery exhibit.	Milwaukee	\$1,000
EAST SIDE PERFORMERS WORKSHOP, INC.	Exhibitions and visiting artist series at Perihelion Photographic Gallery.	Milwaukee	\$1,000
PAUL CASTER	Exhibit and book commemorating the 20th Anniversary Series of the Milwaukee Symphony Orchestra; drawings and lithographs.	National circulation	\$1,000
STEVEN DOUGLAS FOSTER	Creating the "Makom" series of negative print images.	Milwaukee	\$1,500
KIRSTEN W. McCLINTOCK	Alternate energy series: large outdoor sculptures.	Door, Milwaukee, Jefferson	\$2,256
ALVERNO COLLEGE FINE ARTS GALLERY	Exhibit of 23 Alice Neel portrait paintings.	Milwaukee	\$ 500
RACINE URBAN AESTHETICS, INC.	Production of a 30-second TV message to increase public awareness of urban aesthetics.	Racine	\$ 425

GRANTEE/PROJECT TITLE	PROJECT DESCRIPTION	OF ACTIVITIES	AMOUNT
LEWIS KOCH	A photo study and exhibit of Beloit neighborhood.	Racine	\$ 425
THEODORE LYMAN WRIGHT ART CENTER	Catalogue for exhibit "Colt on Paper," featuring the work of John Colt.	Rock, Sheboygan, Racine	\$1,000
FRED ESCHER	Publication aid for <u>Animals: Drawings and Photographs</u> , a cycle of fables.	Rock	\$ 800
SANDRA BYERS	Experimentation with porcelain formulas in creating a series of small life-inspired forms.	Dane	\$ 500
BRENT COX	Public demonstrations of glass-blowing and experiments with colorants.	Iowa	\$ 750
COLLEEN MARIE OTT	Experiments with silver electroplating on glass.	Iowa, Dane	\$1,000
RICHARD LONG	Three dimensional bas-relief works dealing with contemporary religious imagery.	Dane	\$1,500
ART PLACE, INC./CENTER GALLERY	Visual arts lecture/discussion series.	Dane	\$ 300
ART PLACE, INC./CENTER GALLERY	1979 artist show fees.	Dane	\$1,300
MELIVIN F. BUTOR	Multi-media experiments with "the reflected image."	Dane	\$ 500
CHARLES SCHOENGRUND	Photographic study of Romanian folk arts.	Dane, Columbia	\$ 300
ALFRED V. DELA ROSA	Book and document restoration workshops.	Dane	\$1,250
JAMES J. CLUMPNER	Creation of a mobile glass-blowing shop for demonstrations.	Dane	\$ 750
MADISON ART CENTER, INC.	Touring exhibition of Warrington Calescott, "History of Printmaking."	Dane, Portage, Marathon	\$3,000
SHARON CHOISSER	Experimentation with enamels on metal using photographic processes.	Dane	\$1,150
CAROL CAMERON	Workshops in printing and bookmaking.	Dane	\$1,150
BACIA S. EDELMAN	Clay sculpture, joining and firing tests.	Dane	\$ 800
GIBSON BYRD	Model fees.	Dane	\$ 720
WI STATE PRISON--WAUPUN	Visual Fine Arts Program, supplies and materials	Dodge	\$1,500
DON LA VIERE TURNER	Metalpoint drawing.	Marquette	\$ 800



GRANTEE/PROJECT TITLE



PROJECT DESCRIPTION

COUNTY LOCATION OF ACTIVITIES

GRANT AMOUNT

ARTSPEOPLE-WEST C.A.P.	Steel sculptures in area parks.	Dunn	\$1,500
GARY D. HAGEN	Studio work and materials.	Portage	\$1,000
LEIGH YAWKEY WOODSON ART MUSEUM, INC.	"Americans in Glass," an exhibit of contemporary works by 59 artists.	Nationwide	\$1,500
CLARY NELSON-COLE	"The Futurist," a series of photo-engravings and photo-etchings.	Brown	\$ 700
WI ART EDUCATION ASSOCIATION	Youth Art Month	Statewide	\$ 600
UW-OSHKOSH	Documentation and exhibit of Wisconsin grassroots art.	Sheboygan, Winnebago, Dane	\$2,500
ELISHA D. SMITH PUBLIC LIBRARY	Purchase of a soft-sculpture tableau, "Jean Nicolet and the Winnebago Indians."	Winnebago, Outagamie	\$1,000
UNIVERSITY OF WISCONSIN FOX CITIES FOUNDATION, INC.	Support of crafts industry for area artisans.	Outagamie, Winnebago, Calumet	\$2,500
<u>VISUAL ARTS FELLOWSHIPS</u>	Five Wisconsin visual artists were awarded \$3,000 fellowships in 1979.		
PETER BRABBE	Sculpture	Madison	\$3,000
SHARON HOWLETT	Sculpture	Phillips	\$3,000
ANITA WESSLER-WIEDENHOEFT	Metalwork	Madison	\$3,000
GREGORY X. CONNIFF	Photography	Madison	\$3,000
PAUL CASTER	Drawing	Milwaukee	\$3,000

GRANTEE/PROJECT TITLE
FY 1978

COUNTY LOCATION
OF ACTIVITIES

GRANT
AMOUNT

PROJECT DESCRIPTION

COMMUNITY ARTS PROGRAM

GRANTEE/PROJECT TITLE FY 1978	COUNTY LOCATION OF ACTIVITIES	GRANT AMOUNT
ARTWORKS, INC.	Marinette	\$1,000
BOSCOBEL AREA COUNCIL FOR THE ARTS	Grant	\$2,012
CULTURAL ARTS COUNCIL OF CEDARBURG	Ozaukee	\$2,200
COMMUNITY ARTS COUNCIL OF SOUTH WOOD COUNTY	Wood	\$ 267
COMMUNITY ARTS COUNCIL OF SOUTH WOOD COUNTY	Wood	\$2,518
DANE COUNTY ARTS COUNCIL	Dane	\$1,500
DODGEVILLE CULTURAL ARTS COMMITTEE	Iowa	\$1,200
TOWN OF ETTRICK	Trempeleau	\$ 958
FINE ARTS CENTER (New Richmond)	St. Croix	\$2,025
GREATER MILWAUKEE COUNCIL OF THE ARTS FOR CHILDREN	Milwaukee	\$3,000
MILWAUKEE HISPANIC ARTS COUNCIL	Milwaukee	\$2,020
MILWAUKEE INNER CITY ARTS COUNCIL	Milwaukee	\$3,150

NORTHERN ARTS COUNCIL	Arts activities for 10,400 students in four counties.	Vilas, Portage, Langlade, Oneida	\$ 900
VILLAGE OF PRAIRIE DU SAC	Matching funds for the mounting of historic murals in the village public library.	Sauk	\$1,000
PROJECT PEOPLE/CESA 10	Workshop to assess the relationship of community arts development and a three-year federally funded arts education program.	Calumet, Sheboygan Manitowoc	\$ 375
RICHLAND AREA ARTS COUNCIL	Multidisciplinary arts activities: public performances, theatre workshops for children, literary workshops, Ocooch Mountain Festival and film series.	Richland	\$2,900
ROCK PRAIRIE ARTS COUNCIL	Multi-arts fine arts festival.	Rock	\$1,400
SHAWANO COUNTY ARTS COUNCIL	Publicity and promotion for arts activities and the implementation of a business and industry arts sponsorship plan.	Shawano	\$3,300
SOMERSET ARTS COUNCIL	To produce an original musical based on the oral history of the area during the Great Depression.	St. Croix	\$1,500
WAUSAU AREA PERFORMING ARTS FOUNDATION	For every \$2 raised from local businesses, \$1 was awarded in grant funds to support a two-day downtown Wausau arts festival.	Marathon	\$2,500
WESTERN WISCONSIN REGIONAL ARTS	Bringing the arts to rural and suburban areas through cooperation of the library system bookmobile.	Buffalo, Juneau, La Crosse, Trempeleau, Vernon	\$3,000
BOSCOBEL AREA COUNCIL FOR THE ARTS	Grants were awarded to four arts agencies for three-day workshops to assist groups in developing their skills as sponsors. Areas covered included budgets, booking, contracts, promotion, publicity and ticket selling. During individual workshops, actual events were planned.	Grant	\$ 500
DODGEVILLE CULTURAL COMMITTEE		Iowa	\$ 500
SOUTH WOOD COUNTY COMMUNITY ARTS COUNCIL		Wood	\$ 500
FINE ARTS CENTER, New Richmond		St. Croix	\$ 500

GRANTEE/PROJECT TITLE FY 1979	PROJECT DESCRIPTION	COUNTY LOCATION OF ACTIVITIES	GRANT AMOUNT
ARTSPEOPLE OF WISCONSIN	Arts classes and demonstrations.	Dunn and Pierce	\$2,500
SHAWANO COUNTY ARTS COUNCIL	Funds for audience development, including the publication of an arts journal.	Shawano	\$3,000
COMMUNITY ARTS COUNCIL OF SOUTH WOOD COUNTY	One-day consultant to evaluate existing arts display areas.	Wood	\$ 50
GREATER MILWAUKEE COUNCIL OF THE ARTS FOR CHILDREN	Summer arts enrichment experiences for Milwaukee youth.	Milwaukee	\$5,000
RACINE ARTS COUNCIL, INC.	Funds to sponsor "The American Wind Symphony," a multi-million dollar arts center on a riverboat.	Racine	\$2,000
DODGEVILLE CULTURAL ARTS COMMITTEE	Videotape of the play "The Life and Times of Henry Dodge."	Iowa	\$ 120
CITY OF MADISON CULTURAL AFFAIRS COMMITTEE	Consultant to lead a three-day workshop to develop an implementation plan for the city's per cent for art ordinance.	Dane	\$ 479
CITY OF HURLEY and the NORTH	A two-day folk arts festival as part of a ten-day North Country Heritage Festival	Iron	\$3,500
ARTS DEVELOPMENT COUNCIL OF MILWAUKEE	Funds for compiling and printing Milwaukee Arts Resource Directory.	Milwaukee	\$6,100

***In order to improve the grantsmaking timetable of the Community Arts Program, the deadline was changed making the 1979 granting cycle three months in length. A considerably smaller number of grants was awarded as a result. The program's federal dollars were reassigned to FY 1980 and expended in 1980.

GRANTEE FY78/LOCATION
OF ACTIVITIES

ARTIST

PROJECT DESCRIPTION

COUNTY

LENGTH

ARTISTS-IN-RESIDENCE PROGRAM

BAYVIEW HIGH SCHOOL/ Milwaukee	Henry Josefsberg	Professional filmmaker in residence working with students and teachers on 8 mm film production.	Milwaukee	10 Weeks
HILBERT HIGH SCHOOL/ Hilbert	Richard Goodwin	Filmmaker in residence project.	Calumet	10 Weeks
WESTSIDE ELEMENTARY/ River Falls	Victor Sullivan	Professional video artist in residence working with the school and area television station in 8 mm film and video production.	Pierce	
STEFERT ELEMENTARY ELM CREATIVE ARTS ELEMENTARY/Milwaukee	Edgar Jeter	Painter/sculptor in residence in two schools leading projects in murals, assemblage, drawing, and sculpture.	Milwaukee	9 Months
MARQUETTE UNIVERSITY HIGH SCHOOL/Milwaukee	Estherly Allen	Painter in residence for the school year.	Milwaukee	9 Months
RICHLAND CENTER HIGH SCHOOL/Richland Center	Holly Highfill	Mural artist led painting of indoor mural during residency.	Richland	15 Days
WAUNAKEE ELEMENTARY/ Waunakee	Caryl Yasko	Mural artist residency.	Dane	15 Days
RIVER FALLS SCHOOL SYSTEM/River Falls	Metro Theater Circus	Children's theatre company in residence to complete a month-long creative drama specialist's activities.	Pierce	1 Month
WAUSAU PERFORMING ARTS FOUNDATION and WAUSAU PUBLIC SCHOOLS Wausau	David Kubach	Writer in residence.	Marathon	10 Weeks
ASSUMPTION HIGH SCHOOL/Wisconsin Rapids	John Tuschen	Poet in residence.	Wood	5 Days
BEAVER DAM UNIFIED SCHOOL DISTRICT/ Beaver Dam	David Kubach	Poet in residence.	Dodge	5 Days
BEN FRANKLIN SCHOOL/ Franklin	David Steingass	Poet in residence.	Milwaukee	5 Days

GRANTEE FY78/LOCATION
OF ACTIVITIES

ARTIST

PROJECT DESCRIPTION

COUNTY

LENGTH

BIG FOOT HIGH/Walworth	John Tuschon	Poet in residence.	Walworth	5 Days
BLACK EARTH ELEMENTARY/ Black Earth	Dennis Trudell	Poet in residence.	Dane	5 Days
BOSCOBEL HIGH Boscobel	Jeff Poniewiz	Poet in residence.	Grant	5 Days
CATHOLIC MEMORIAL HIGH/Waukesha	David Kubach	Poet in residence.	Waukesha	5 Days
COOLIDGE SCHOOL Neenah	Dennis Trudell	Poet in residence.	Winnebago	5 Days
DODGEVILLE HIGH SCHOOL/ Dodgeville	Jeff Poniewaz	Poet in residence.	Iowa	5 Days
DANE COUNTY JUVENILE DETENTION CENTER Madison	Dennis Trudell	Poet in residence.	Dane	5 Days
EAST TROY ELEMENTARY East Troy	David Steingass	Poet in residence.	Walworth	5 Days
ELM CREATIVE ARTS ELEMENTARY/Milwaukee	James Hazard and Dennis Trudell	Poets in residence.	Milwaukee	5 Days
FLORENCE COUNTY SCHOOLS/Florence	Dennis Trudell	Poet in residence.	Florence	5 Days
GEBHARDT ELEMENTARY Black River Falls	Peg Carlson Lauber	Poet in residence.	Jackson	5 Days
JACKSON ELEMENTARY Jackson	David Steingass	Poet in residence.	Washington	5 Days
JAMES MADISON ELEMEN- TARY/Stevens Point	David Steingass	Poet in residence.	Portage	5 Days
JAMES WILLIAMS JUNIOR HIGH/Rhineland	David Kubach	Poet in residence.	Oneida	5 Days
JOHN F. KENNEDY ELE- MENTARY/Junction City	Lorna Balian	Writer/illustrator in residence.	Portage	1 Day
JOHNSON CREEK SCHOOLS Johnson Creek	Dennis Trudell	Poet in residence.	Jefferson	5 Days
KIEL HIGH SCHOOL	John Tuschon	Poet in residence.	Calumet	5 Days

LAKESHORE ELEMENTARY/ Fond du Lac	James Hazard	Poet in residence.	Fond du Lac	5 Days
MADISON PUBLIC SCHOOLS Crestwood Elementary	Sara Rath	Madison Public Schools placed poets in residence for 78 days in 1978.	Dane	78 Days
Falk Elementary	David Steingass			
Huegel Elementary	Dennis Trudell			
Lowell Elementary	Bruce Taylor			
Marquette Middle				
Mendota Elementary				
Shorewood Elementary				
Thoreau Elementary				
Emerson Elementary				
Allis Elementary				
Sherman Elementary				
Marquette Elementary				
Orchard Ridge Elementary				
Sandburg Elementary				
Orchard Ridge Middle				
Hawthorne Elementary				
Schenk Middle				
Gompers Middle				
Jefferson Middle				
Schenk Elementary				
Kennedy Elementary				
Glendale Elementary				
Elvehjem Elementary				
Gompers Elementary				
Randall Elementary				
Midvale Elementary				
Van Hise Elementary				
Spring Harbor Elementary				
Lincoln Middle				
MAPLE DALE SCHOOL Milwaukee	James Hazard	Poet in residence.	Milwaukee	5 Days
MELLEN PUBLIC SCHOOLS Mellen	David Kubach	Poet in residence.	Ashland	5 Days
MINERAL POINT HIGH Mineral Point	John Tuschen	Poet in residence.	Iowa	5 Days
MONROE PUBLIC SCHOOLS Monroe	James Hazard	Poet in residence.	Green	5 Days

GRANTEE FY78/LOCATION
OF ACTIVITIES

ARTIST

PROJECT DESCRIPTION

COUNTY

LENGTH

MURPHY HIGH/Hurley	Bink No11	Poet in residence.	Iron	5 Days
NORTHVIEW ELEMENTARY Howards Grove	David Kubach	Poet in residence.	Sheboygan	5 Days
NORTHERN HILL ELEMEN- TARY/Onalaska	David Steingass	Poet in residence.	La Crosse	5 Days
NEW GLARUS SCHOOLS New Glarus	Bink No11	Poet in residence.	Green	5 Days
OREGON SCHOOL DISTRICT Oregon	David Kubach	Poet in residence.	Dane	5 Days
PARKVIEW ELEMENTARY Cedarburg	David Sveingass	Poet in residence.	Ozaukee	5 Days
PITTSVILLE PUBLIC SCHOOLS/Pittsville	John D. Whitney	Poet in residence.	Wood	5 Days
PLATTEVILLE HIGH Platteville	David Steingass	Poet in residence.	Grant	5 Days
PRAIRIE SCHOOL Racine	David Steingass	Poet in residence.	Racine	5 Days
RANDOM LAKE ELEMENTARY Random Lake	James Hazard	Poet in Residence.	Sheboygan	5 Days
REEDSVILLE HIGH Reedsville	Jeff Poniewaz	Poet in residence.	Manitowoc	5 Days
RICE LAKE AREA SCHOOLS Rice Lake	David Kubach	Poet in residence	Barron	5 Days
ROYAL OAKS ELEMENTARY Sun Prairie	Lorna Balian	Writer/illustrator of children's books in residence.	Dane	1 Day
ST. ISIDORE Newton	J. D. Whitney	Poet in residence.	Manitowoc	5 Days
ST. JAMES LUTHERAN Shawano	David Kubach	Poet in residence.	Shawano	5 Days
SAUK TRAIL SCHOOL Middleton	Sara Rath	Poet in residence.	Dane	5 Days
SOMERSET LIC SCHOOL Somerset	David Steingass	Poet in residence.	St. Croix	5 Days

SOUTH MILWAUKEE SENIOR HIGH/South Milwaukee	James Hazard	Poet in residence.	Milwaukee	5 Days
STILLSON ELEMENTARY Chippewa Falls	Bruce Taylor	Poet in residence.	Chippewa	5 Days
SUN PRAIRIE SENIOR HIGH Sun Prairie	Jeff Poniewaz	Poet in residence.	Dane	
WALDEN III HIGH SCHOOL Racine	Bruce Taylor	Poet in residence.	Racine	5 Days
WASHINGTON JUNIOR HIGH SCHOOL/New London	Jeff Poniewaz	Poet in residence.	Waupaca	5 Days
WEBSTER TRANSITIONAL SCHOOL/Cedarburg	Jeff Poniewaz	Poet in residence.	Ozaukee	5 Days
WEST ALLIS SCHOOL DISTRICT/West Allis	James Hazard	Poet in residence.	Milwaukee	5 Days
WHITMAN FUNDAMENTAL SCHOOL/Milwaukee	Lorna Balian	Writer/illustrator of children's books in residence.	Milwaukee	1 Day
WINNECONNE ELEMENTARY Winneconne	David Steingass	Poet in residence.	Winnebago	5 Days
WISCONSIN DELLS JUNIOR HIGH/Wisconsin Dells	David Clewell	Poet in residence	Columbia	5 Days

GRANTEE FY 79/LOCATION
OF ACTIVITIES

ARTIST

PROJECT DESCRIPTION

COUNTY

LENGTH

ARTISTS-IN-RESIDENCE PROGRAM

ST. PAUL ELEMENTARY Manitowoc	Mark Brunner	Poet in residence.	Manitowoc	5 Days
MADISON ELEMENTARY Marshfield	Lorna Balian	Storyteller, author and illustrator.	Wood	1 Day
LINCOLN HIGH SCHOOL Manitowoc	J. D. Whitney	Poet in residence.	Manitowoc	5 Days
WASHINGTON ELEMENTARY Merrill	Mark Brunner	Poet in residence.	Lincoln	5 Days
SAUK TRAIL ELEMENTARY Middleton	Lorna Balian	Storyteller, author and illustrator.	Dane	1 Day
SAUK TRAIL ELEMENTARY Middleton	Caryl Yasko	Muralist. Students produced a school mural.	Dane	15 Days
SHALOM HIGH SCHOOL Milwaukee	Robert Muffoletto	Photographer in residence. Guest artists provided one day workshops.	Milwaukee	9 Months
MILWAUKEE PERFORMING ART CENTER/Milwaukee	Robert Geniusz	Filmmaker in residence for summer session.	Milwaukee	10 Weeks
ELM CREATIVE ARTS SCHOOL/Milwaukee	Lorna Balian	Storyteller, author and illustrator.	Milwaukee	1 Day
ST. EUGENE'S SCHOOL Milwaukee	Lorna Balian	Storyteller, author and illustrator.	Milwaukee	1 Day
GAENSLER PUBLIC SCHOOLS/Milwaukee	Lorna Balian	Storyteller in residence.	Milwaukee	1 Day
PRAIRIE VIEW ELEMENTARY Mukwonago	David Clewell	Poet in residence.	Waukesha	5 Days
SHEPARD HILLS Oak Creek	Mark Brunner	Poet in residence.	Milwaukee	5 Days
FAUVER HILL ELEMENTARY Onalaska	Lorna Balian	Storyteller in residence.	La Crosse	1 Day

GRANTEE 9/LOCATION OF ACTIVITIES	ARTIST	PROJECT DESCRIPTION	COUNTY	LENGTH
ONEIDA TRIBE Oneida Reservation	Roberta Hill	Poet in residence. Visiting artists in theatre and visual arts.	Brown/Outa- gamie	8 Months
ARLINGTON HEIGHTS Eau Claire	Peg Lauber	Poet in residence.	Eau Claire	5 Days
LAC COURTE OREILLES OJIBWA HIGH SCHOOL/ Hayward	Sara Balbin	Painter in residence. Guest artists included.	Sawyer	5 Months
LADYSMITH ELEMENTARY Ladysmith	Mark Brunner	Poet in residence.	Rusk	5 Days
PHILLIPS HIGH SCHOOL Phillips	Mark Brunner	Poet in residence.	Price	5 Days
PRENTICE HIGH SCHOOL Prentice	Mark Brunner	Poet in residence.	Price	5 Days
TOWNVIEW SCHOOL BeToit	David Steingass	Poet in residence.	Rock	5 Days
CLINTONVILLE HIGH SCHOOL/Clintonville	David Steingass	Poet in residence.	Waupaca	5 Days
FONTANA ELEMENTARY Fontana	Peg Lauber	Poet in residence.	Walworth	5 Days
PLEASANT VIEW Franklin	David Steingass	Poet in residence.	Milwaukee	5 Days
BEN FRANKLIN ELEMENTARY Franklin	Lorna Balian	Illustrator and author of children's books.	Milwaukee	1 Day
DROUGHT ELEMENTARY Franksville	Mark Brunner	Poet in residence.	Racine	5 Days
GLEN HILLS MIDDLE SCHOOL/GTendale	Jeff Poiewaz	Poet in residence.	Milwaukee	5 Days
JACKSON ELEMENTARY Jackson	Lorna Balian	Illustrator and author of children's books.	Washington	1 Day
JACKSON ELEMENTARY Janesville	David Steingass	Poet in residence.	Rock	5 Days
MONROE ELEMENTARY Janesville	David Steingass	Poet in residence.	Rock	5 Days

GRANTEE FY79/LOCATION
OF ACTIVITIES

ARTIST	PROJECT DESCRIPTION	COUNTY	LENGTH
ADAMS ELEMENTARY Janesville	Poet in residence.	Rock	5 Days
ST. JOHN THE BAPTIST Jefferson	Poet in residence.	Jefferson	5 Days
JOHN F. KENNEDY ELE- MENTARY/Junction City	Storyteller.	Portage	1 Day
CENTRAL HIGH SCHOOL La Crosse	Poet in residence.	La Crosse	5 Days
RED CABOOSE DAY CARE CENTER/Madison	Muralist. Painted a mural with pre-school children.	Dane	18 Days
JOHN EDWARDS HIGH SCHOOL/Port Edwards	Poet in residence.	Wood	5 Days
PRINCETON PUBLIC SCHOOLS/Princeton	Poet in residence.	Green Lake	5 Days
PULASKI HIGH SCHOOL Pulaski	Poet in residence	Outagamie	5 Days
GLENBROOK ELEMENTARY Pulaski	Video artists in residence.	Outagamie	5 Days
FAIRVIEW ELEMENTARY Pulaski	Poet in residence.	Brown	5 Days
ST. LUCY SCHOOL Racine	Muralist in residence.	Racine	20 Days
PRAIRIE SCHOOL Racine	Poet in residence.	Racine	5 Days
SHEBOYGAN PUBLIC SCHOOLS/Sheboygan	Visual artist worked with students in painting and drawing.	Sheboygan	9 Months
SOBIESKE ELEMENTARY Pulaski	Video artists in residence.	Oconto	5 Days
JOHN F. KENNEDY PREP SCHOOL/St. Nazianz	Poet in residence.	Manitowoc	5 Days
MADISON ELEMENTARY Stevens Point	Poet in residence.	Portage	5 Days

GRANTEE /LOCATION
OF ACTIVITIES

ARTIST

PROJECT DESCRIPTION

COUNTY

LENGTH

GRANTEE /LOCATION OF ACTIVITIES	ARTIST	PROJECT DESCRIPTION	COUNTY	LENGTH
MADISON ELEMENTARY	David Steingass	Poet in residence.	Portage	5 Days
BEN FRANKLIN JUNIOR HIGH SCHOOL Stevens Point	Dennis Darmek and Paul Fix	Video artists in residence.	Portage	5 Days
BEN FRANKLIN JUNIOR HIGH SCHOOL Stevens Point	David Steingass	Poet in residence.	Portage	5 Days
SUN PRAIRIE HIGH Sun Prairie	David Steingass	Poet in residence.	Dane	5 Days
TOMAH AREA SCHOOLS Tomah	Mark Brunner	Poet in residence.	Monroe	5 Days
LONGFELLOW ELEMENTARY West Allis	Lorna Balian	Storyteller, author and illustrator.	Milwaukee	1 Day
WASHINGTON ELEMENTARY West Allis	David Clewell	Poet in residence.	Milwaukee	5 Days
WALKER SCHOOL West Allis	David Clewell	Poet in residence.	Milwaukee	5 Days
FRANKLIN SCHOOL West Allis	Lorna Balian	Storyteller in residence.	Milwaukee	1 Day
RICHARDS SCHOOL Whitefish Bay	Lorna Balian	Storyteller in residence.	Milwaukee	1 Day
LINCOLN HIGH SCHOOL Wisconsin Rapids	Guthrie Theatre	Theatre company in residence.	Wood	5 Weeks
MADISON PUBLIC SCHOOLS Emmerson Elementary Lindberg Elementary Lowell Elementary Mendota Elementary Sandburg Elementary Falk Elementary Stevens Elementary Thoreau Elementary Jefferson Middle Lapham Elementary Elvehjem Elementary Crestwood Elementary Huegel Elementary	Dennis Trudell David Clewell Roberta Hill David Steingass	Poets in residence.	Dane	1-3 Days

GRANTEE FY79/LOCATION
OF ACTIVITIES

ARTIST

PROJECT DESCRIPTION

COUNTY

LENGTH

GRANTEE FY79/LOCATION OF ACTIVITIES	ARTIST	PROJECT DESCRIPTION	COUNTY	LENGTH
MADISON PUBLIC SCHOOLS CONTINUED	Dennis Trudell David Clewell	Poets in residence.	Dane	1-3 Days
Orchard Ridge Elementary	Roberts Hill			
Spring Harbour Elementary	David Steingass			
Orchard Ridge Middle				
Lakeview Elementary				
Marquette Elementary				
Sherman Elementary				
Woyt Elementary				
Leopold Elementary				
Longfellow Elementary				
Randall Elementary				
Shorewood Elementary				
Marquette Middle				
Lincoln Middle				
Sherman Middle				
Midvale School				
Gompers Elementary				
Lake View Elementary				
Allis Elementary				
Glendale Elementary				
Kennedy Elementary				
Schenk Elementary				
Midvale Elementary				
Van Hise Elementary				
Schenk Middle				
Gompers Middle				