
Wisconsin Arts Board 1991 Annual Report

To the Honorable Tommy G. Thompson, Governor of the State of Wisconsin, and members of the Wisconsin State Legislature: I have the honor to present to you the Annual Report of the Wisconsin Arts Board, an agency of the State of Wisconsin, for the fiscal year ending June 30, 1991.

Arley G. Curtz
Executive Secretary

Editor: George Tzougros
Assistant Editors, Designers: Stefanie Davis and Eric Houghton

Wisconsin Arts Board 1991 Annual Report

Contents:

Chairman's Report	2
Executive Secretary's Report	3
The Wisconsin Arts Board	4
Board and Staff Members	5
Artistic Program Support	6
Small Organization Support	7
Individual Artist Program	8
Percent for Art	10
Folk Arts Grant Program	12
Rural Arts Initiative	13
Arts-In-Education	14
Salary Assistance	15
Pan Wisconsin and Wisconsin Touring Program	16
Community Arts program	17
Conferences and Services	18
Panelists	19
Finance Report	20
Grants Awarded	22

CHAIRMAN'S REPORT



Kathryn Murphy
Burke, Chairman

At the outset I want to thank our Governor and the State Legislature for their continued commitment to development and enhancement of the arts in Wisconsin. While many of our counterparts across the country were struggling, funding in Wisconsin remained steady enabling our services to be maintained.

As I began serving as Chairman of the Wisconsin Arts Board, I made a commitment to expand communication between the Arts Board and the numerous artists and arts organizations across our state. It was my belief that the Board was much more than the state agency established to distribute state and federal funding. I believed that it was incumbent that we aggressively seek the views and

opinions of Wisconsin arts leaders and engage them in the policy-making of the organization.

After a productive review of the Wisconsin Arts Board, our Strategic Planning Advisory Committee developed some excellent recommendations to improve the functions of the Wisconsin Arts Board. One of the suggestions was to develop a regional network whereby two-way communication could be developed between the Arts Board and the arts community. As the fiscal year closed, this network was in the process of further changes.

Other notable efforts to increase communication were the four budget summits held across the state to inform arts leaders about our budget process. In addition, the development of our Access to the Arts for persons with Disabilities Advisory Committee helped spearhead the agency's efforts to better serve persons with disabilities.

National arts leaders across the country came to Wisconsin in October, 1990, as the Arts Board hosted the annual meeting of the National Assembly of State Arts Agencies in Milwaukee. We gathered national recognition as arts leaders were treated to a series of events that showcased the wealth of talent and artistic opportunities that exist in Wisconsin.

At this time, I want to express our appreciation to Arley Curtz, our Executive Director for the past six years, who announced in May that he would be leaving the agency. Arley's strong devotion to the value of the arts in our society guided him throughout his work.

I would also like to give a special word of thanks to our partners who have assisted us in expanding our communication and improving the programs and services we offer to the state's citizens. We have successfully worked with the UW-Madison Continuing Education in the Arts on the extremely productive Artist Teacher Institute, and WHA Radio on the production of the popular Downhome Dairyland radio show. We have also worked with the Department of Public Instruction, the Wisconsin Alliance for Arts Education, the Wisconsin Presenters Network and the Division of Tourism, in a variety of capacities.

EXECUTIVE SECRETARY'S REPORT

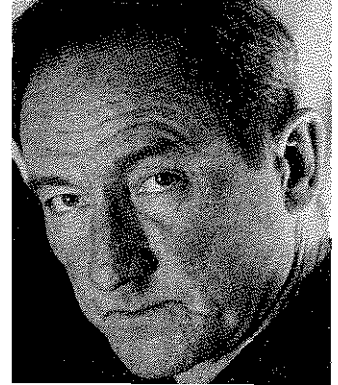
Looking back on my final year at the Wisconsin Arts Board, a few of fiscal year 1991's highlights stand out in my memory. The Budget Summits across the state demonstrated to the staff and me that there are many people across Wisconsin who believe in and value the arts in their lives. Their commitment and devotion is deeply appreciated.

During the past year, the Board undertook a close examination of the Artistic Program Support I Program (APS I), which supports large art organizations. After numerous discussions that closely involved the APS I applicants, I believe the Board made some major headway in tightening and improving our program. I am confident that it will serve as an excellent model for other Arts Board programs.

A high point of fiscal year 1991 was the National Assembly of State Arts Agencies's (NASAA) decision to hold its annual meeting in Milwaukee. This was an exciting moment for the Wisconsin Arts Board because it exemplified that Wisconsin is considered, across the nation, a place where our nation's arts leaders can gather to talk about current issues and their involvement with the arts. I believe it is an important testimony to our tremendous arts community.

In closing I want to say that I am very proud of the accomplishments, growth, and stature of the agency in the six years that I have been the director. Our budget has more than doubled, including an increase of more than 30% in federal funds coming to Wisconsin. More than 1,500 grant applications are processed annually. Each year our grant programs reach more Wisconsin residents. The Wisconsin Arts Board has a superb regional and national representation. These elements of my agenda as director of the agency are now essentially complete.

The full-time staff of highly skilled professionals continues to diligently serve the people of the state in an exceptional manner. I would like to take this opportunity to thank the staff for their consistent work in improving the Arts Board. I would also like to thank the part-time interns from the Center for Arts Administration at the Graduate School of Business, Julia Gleich, Artists-in-Education Assistant and Martha Lovejoy, Grants Assistant; and from the School of Journalism and Mass Communications, Karen Kaplan, Eric Houghton, and Stefanie Davis, Public Relations Assistants.



Arley G. Curtz,
Executive Secretary

WISCONSIN ARTS BOARD

The Wisconsin Arts Board provides a diverse range of services and funding programs to encourage and support the arts in this state.

An independent state agency, the Wisconsin Arts Board is made up of a 12-member citizen board appointed by the Governor, as well as a professional staff of arts administrators, fiscal and support personnel. In cooperation with the staff, the citizen board develops the state's art policies and approves all grant disbursements.

In its 17-year history, the Arts Board has distributed funding to individual artists and arts organizations, with funds provided by the State Legislature and the National Endowment for the Arts.

Grants are awarded through a variety of programs encompassing every artistic discipline. Profiles of each program follow in this report.

Grant applications are reviewed by panels of peers, selected for their knowledge and understanding of an arts discipline and their experience in arts administration. Emphasis is placed on securing panelists of color and under-represented geographic areas. Panels also serve to help the Board identify artistic trends and needs in the state.

In addition to grants programs, the Arts Board provides various technical services and publications, including the Visual Artists Slide Registry, the Art and Craft Fairs Directory, and *Bulletin*, the agency's quarterly newsletter.

The Arts Board also sponsors arts conferences, grant workshops, and community meetings.

Wisconsin artists and organizations benefit from the Arts Board's membership in Arts Midwest, a nine-state regional arts organization, which distributes grants, arts information, and fellowships.

FY 1991 Grants Overview

Number of Applications	1547
Amount Requested	\$6,499,853
Number of Grants Awarded	265
Amount Awarded by WAB	\$1,275,117
Number of People Attending WAB funded events	1,521,622
Number of artists benefiting	10,791

BOARD & STAFF MEMBERS

Board

Jeanne Brunette-Tregoning, Shullsburg
Kathryn Murphy Burke, Chairman, Milwaukee
James Carley, Madison
Lloyd Herrold, Milwaukee
Gloria Kirking, Merrimac
John Koci, Wausau
Jane Lathrop, Madison
Sandra Mills, Appleton
Jill Pelisek, Milwaukee
Kathy Plautz, Mequon
Patricia Rusch, Rhinelander
Mary Alice Wimmer, Madison

Staff

Arley G. Curtz, Executive Secretary
Dean Amhaus, Deputy Director
Renee Cobb, Receptionist
Peggy Keach, Financial Assistant
Elizabeth Malner, Percent for Art Coordinator
Christine Manke, Artists-In-Education Coordinator
Richard March, Traditional and Ethnic Arts Coordinator
Bonnie Marks, Board Secretary
Kathleen Gehrke Michalski, Information Management Coordinator
Connie Miller, Budget Coordinator
Sandy Rogers, ASBEG Coordinator
Gretchen Thomson, Community and Information Development Coordinator

ARTISTIC PROGRAM SUPPORT

I am a Woman
By Debbie P.

Being tired
Feeling
depressed
Having a good day
Being physically exhausted
Being emotionally exhausted
Being happy
Being wiped out
Whole body hurts
Feeling burned out
Unhappy
Susceptible to illness
Trapped
Worthless
Nothing to give
Troubled
Sleep problems
Hopeless
Rejected by life
Optimistic
Energetic
Anxious
To see what will come

Written during an ARTREACH workshop at Rosalie Manor, Inc., which serves single pregnant women.



Woman from Milwaukee Catholic Home, participating in an ARTREACH collage workshop.

Artistic Program Support grants provide competitive funding opportunities to non-profit arts organizations, whose primary mission is to create, produce, and present arts programming of significant local, statewide, or regional impact. The Arts Board was able to grant \$497,000 of the \$1,169,905 requested by these organizations or 42% of the requests.

A fine example of an APS program at work is **ARTREACH Milwaukee**, an organization that meets the needs of a special population unable to access the more conventional arts organizations. Their APS proposal goals are as follows:

- 1) "to meet the ongoing need for more cultural activities for people in nursing homes, hospitals, group homes, recovery houses, and correctional facilities. Guest artists in such facilities build a special connection between the arts and residents who would not otherwise have access to the arts."
- 2) "to meet an increasing need for programs that involve independent senior adults in the arts. As the elderly population grows, it becomes increasingly important to involve senior adults as both art students and performers. Included will be performances, workshops, touring exhibits, classes and a senior acting group. Over eighty-six professional artists (storytellers and poets, dancers, visual artists, musicians and actors) will lead over one hundred events, benefitting over twenty-one thousand people at agencies and institutions."

The exceptional work of **ARTREACH Milwaukee** is one of many examples of how the Wisconsin Arts Board is meeting the needs of Wisconsin residents.

● SMALL ORGANIZATION SUPPORT

Small Organization Support is the program which provides project grants to non-profit arts groups with an annual budget of less than \$50,000. These grants enable small groups to carry out artistic activities which otherwise would not have been possible, enriching the cultural life of the state.

In fiscal year 1991, quite a variety of projects were funded. The Center for the Visual Arts in Wausau was able to initiate ceramics workshops; Colorlines magazine, a Milwaukee publication featuring the visual and literary works of people of color, was able to improve their marketing and distribution; the Manitowoc Symphony was able to engage noted guest soloists; media artist Jocelyn Riley created an acclaimed slide/tape program, "Mountain Wolf Woman" about a Winnebago elder; the Price County Forestry Department was able to continue their restoration of the unique Fred Smith Concrete Park sculpture garden; and even in the tiny southwestern Wisconsin community of Hazel Green, community theater activities were supported.

The Small Organization Support grants category enables us to reach a diversity of arts groups in smaller and larger communities statewide.



A concrete sculpture by the late Fred Smith. Created for the Folk Art Environment project, which is now called Wisconsin Concrete Park, in Phillips, Wisconsin. WAB provided two grants for restoration of the park, through the Small Organization Support program.

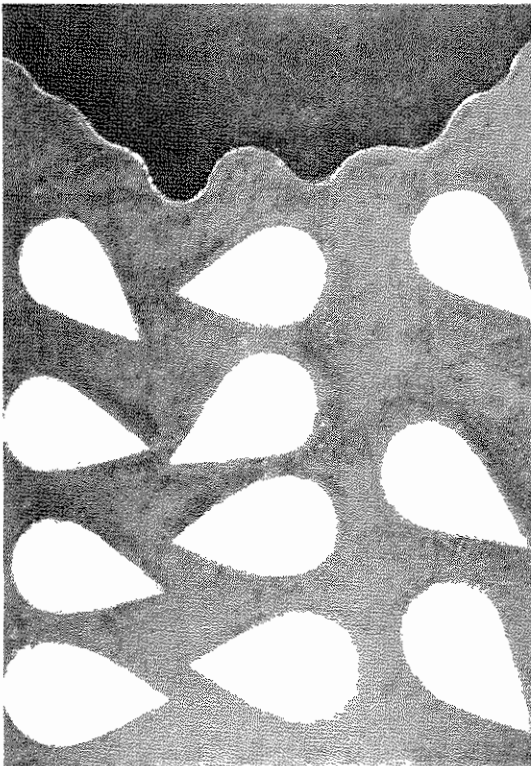
INDIVIDUAL ARTIST PROGRAM

This grant gave me many opportunities which have been and continue to be important to my work. Perhaps one of the most rewarding parts of this project has been that it allowed for experimentation, both in the first and second parts of the proposal. This has been valuable in helping me to see new possibilities both in how I paint and in the themes I choose.

--Jeffrey Ripple

In fiscal year 1991, the Wisconsin Arts Board introduced the Individual Artist Program. This program combines the Fellowships and individual project grants. The new program spans two fiscal years, and offers \$5,000 Fellowships, \$3,500 New Work Awards, and \$1,000 Development Grants. The program was expanded to offer awards to interdisciplinary artists and to media artists, while continuing to offer awards to visual artists, literary artists, music composers and to choreographers. Eligibility requirements were reduced to allow more of the state's artists to apply. The application process consists of two stages, the first based on samples of the artist's work, and the second requiring narrative proposals. These proposals include plans for public service activities, and one solicited from those individuals identified in stage one to receive a New Work Award or Development Grant. Fellowships are awarded after the first stage. Due to the "user-friendliness" of this program, several hundred individual artists applied in fiscal year 1991.

The Fellowship recipients comprise an impressive group of the state's artists. They were profiled on a special "Prime Time Wisconsin" program on WHA-TV. The twelve jurors who carefully selected these ten individuals were consistently impressed with the state's wealth of creative individuals. Green Bay artist Carol Emmons works with site-specific installations, Steven Van de Voorde presents poignant photographic images in his series, "Wheelchair Bound", and ceramist Karen Gunderman produces large-scale wall pieces reminiscent of Latin America. Two media artists from Milwaukee, Debra Robinson and Dennis Darmek received Fellowships in recognition of their unique mastery of video. Composers John Downey and Elizabeth Alexander received awards,



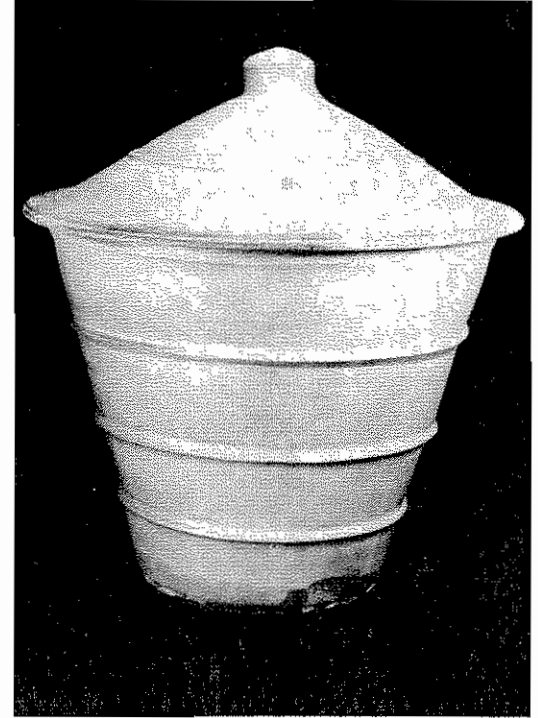
Painting by Luis Roldan

● INDIVIDUAL ARTIST PROGRAM

Alexander deriving information from other art forms, and Downey employing his facility with varied musical material. The writers selected for Fellowships included fiction writers Jesse Lee Kercheval and Jeffrey Marcus, and poet and non-fiction writer Judith Harway.

New Work Awards and Development Grants are awards that require a narrative proposal. This stage encourages artists to focus their attention on one project and to plan for the public to share in the results. There were thirty-five individuals selected for these grants. In their projects, these artists often push themselves beyond their comfort zone to explore new genres, media or subject matter. Often they avoid market pressures for a short time, and are able to grow as artists. Occasionally they take this opportunity to collaborate with other kinds of artists to create exciting multi-media events. Literary artists set aside time to concentrate on their writing, visual artists embark on long awaited projects, and composers and choreographers, with the help of musicians and dancers, realize an evening concert of their work.

The public shares in the results of the Individual Artist Program by attending readings given by the writers and poets or reading through self-published chapbooks. They view the work of visual artists in exhibition spaces, look for work of video artists on their television or future movie theater, and share in the performances of dancers and musicians. The arts of Wisconsin also go abroad with traveling exhibitions, touring performing groups, and recorded and printed media. The Individual Artist program affects various parts of the state in many ways, and has allowed for forty-five individuals to contribute more fully to the state's cultural life.

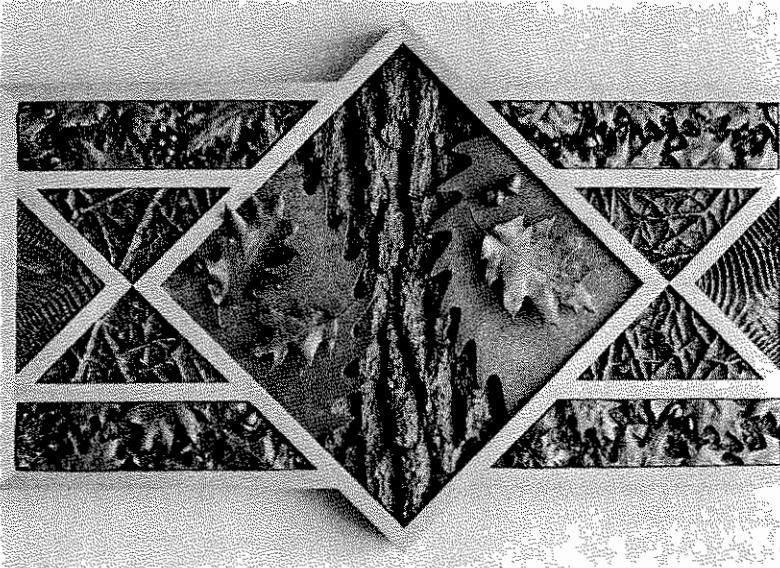


Ceramic Vessel by Willem Gebben

"The work and research initiated during the project has enhanced the overall quality of my drawings. More specifically, the grant has enabled me to explore techniques that would otherwise be inaccessible to me. The new imagery alone has been extremely invigorating and provocative to work with."

—Susan Messer

PERCENT FOR ART



Robert Gehrke's "Crosscut" hangs in UW-Madison's Red Oak Grill at Union South, as a result of the Percent for Art Program.

The Percent for Art Program is responsible for placing works of art in state facilities. The program relies on advisory committees comprised of representatives of the state, the arts community, and facility users, to commission or purchase art with funds allocated according to the program's legislation. The enabling legislation requires that .002 of construction budgets be used to acquire art to enhance and enliven public facilities. Allocated funds also pay the costs of administering the program. The program strives to acquire a varied collection of art from both Wisconsin's artists and in special instances, from those living in other states.

Although projects may span more than one fiscal year, the projects which were completed in fiscal year 1991 are listed on the next page.

Much of the art acquired through the Percent for Art program is placed on University of Wisconsin campuses. The art works enhance various physical education buildings, student centers and academic buildings. By working with individual campuses and their offices with the construction and planning, the Percent for Art program can often play a prominent role in the aesthetic development of the campus. The acquired pieces take their place among other works of art the campuses have collected, and often are important to the image of the university.

Art can be found in many other places in the state. The Percent for Art program has placed art in welcome lobbies and outdoor areas of the Department of Natural Resources facilities in Waunakee, Baraboo, Hayward and Park Falls, and in the Department of Transportation facilities in Milwaukee, Green Bay, Sparta and Fond du Lac.

This past fiscal year, pieces of sculpture made of bronze, stainless steel, and ceramics were acquired. Two-dimensional works including fabric banners, paintings, and weather vanes were also purchased through the program. Projects well under way in fiscal year 1991 included a wall mural, stained glass, and holography.

PERCENT FOR ART

Contracts for the following building projects were negotiated in FY90.
The artwork was installed in 1991.

EAU CLAIRE

UW-Eau Claire
Ade Olson Physical Education Building
Commissioned Artwork: stainless steel sculpture
Artist: Ed McCullough, Cissna Park, Illinois
Contract Date: May 1, 1989 \$11,000

MADISON

UW-Madison
Primate Research Center Annex
Direct Purchase: oil paintings
Artist: Nicholas Keyes, Milwaukee, Wisconsin
Contract Date: May 9, 1990 \$3,900

UW-Madison
Red Oak Grill
Commissioned Artwork: wall relief (2 pieces)
Artist: Robert Gehrke, Eau Claire, Wisconsin
Contract Date: April 25, 1990 \$1,500

STEVENS POINT

UW-Stevens Point
Learning Resources Center
Commissioned Artwork: welded steel sculpture
Artist: Michael Dunbar, Springfield, Illinois
Contract Date: March 4, 1986 \$16,270

OSHKOSH

UW-Oshkosh
Ceramics Lab
Direct Purchase: ceramic whiteware jar
Artist: Christine LePage, Belleville, Wisconsin
Contract Date: May 2, 1990 \$360
Direct Purchase: porcelain and wood sculpture
Artist: R. Farrington Sharp, Dexter, Michigan
Contract Date: May 2, 1990 \$200

PLATTEVILLE

UW-Platteville
Williams Center Fieldhouse
Commissioned Artwork: painted steel sculpture
Artist: Robert Ellison, Penngrove, California
Contract Date: November 27, 1990 \$13,184

MILWAUKEE

UW-Milwaukee
Great Lakes Research Facility
Direct Purchase: wall relief
Artist: Hanna Jubran, Milwaukee, Wisconsin
Contract Date: May 2, 1990 \$2,500
Direct Purchase: stainless steel wall piece
Artist: Narendra Patel, Whitefish Bay, Wisconsin
Contract Date: May 17, 1990 \$1,200

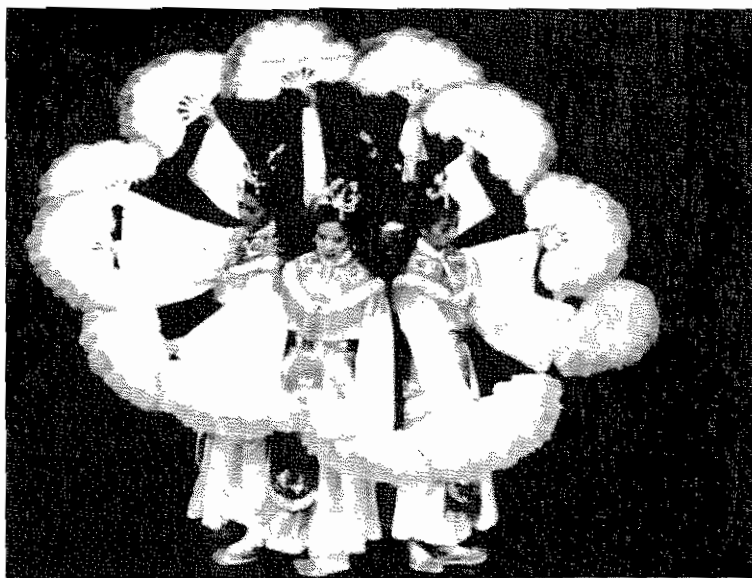
UW-Milwaukee
Student Union Plaza
Commissioned Artwork: fabric banners
Artist: Louise Kodis, Spokane, Washington
Contract Date: October 20, 1989 \$9,950

FOLK ARTS GRANTS PROGRAMS

The folk arts of Wisconsin are supported by two WAB programs, **Folk Arts Opportunities** and **Folk Arts Apprenticeships**. The folk arts programs contribute a great deal to enhancing the appreciation and ensuring the continued vitality of Wisconsin's varied folk traditions.

Folk Arts Opportunities are project grants to non-profit organizations for activities involving the traditions of Wisconsin's people. In fiscal year 1991, ARTREACH Milwaukee, a group which provides cultural activities to people with disabilities, received a grant supporting the creation and touring of an interactive exhibit of handmade folk musical instruments. Performances by expert players of these instruments were included. Ballet Folklórico Mexico of Madison received a grant to assist them in creating beautiful new costumes for an added choreography, "Los Concheros," and the Wisconsin Folk Museum of Mt. Horeb obtained support for their fall folk festival, enabling them to bring in some of the finest folk artists from the entire state of Wisconsin.

Folk Arts Apprenticeships are small grants to individual master folk artists to give them the opportunity to pass on their skills and knowledge to a talented apprentice or apprentices. The program has been especially active in preserving the traditional crafts of Wisconsin's Indian tribes. In fiscal year 1991, apprenticeships went to Winnebago master beadworker, Bertha Blackdeer, who taught her apprentice the demanding diagonal



The Chinese Dance Association of Madison gives an exciting performance. The Folk Arts Opportunity program granted them funding for new costumes and choreography.

fingerwoven hair ornament beadwork known as pah-keh. Ojibwa traditions including quillwork baskets, naturally tanned deerskin moccasins and feather work for dance regalia were taught by such masters as Rick and Cathy Barber, Kevin Roach and Christine Okerlund. In addition to the Woodland Indian crafts, Norwegian rosemaling was taught by Dorothy Peterson of Cashton, African-American storytelling by Tejumola Ologboni of Milwaukee and the crafting of the traditional Puerto Rican stringed instrument cuatro by Juan Cruz, also of Milwaukee

RURAL ARTS INITIATIVE

In fiscal year 1991, the Rural Arts Initiative, continued as a part of our effort to stabilize and enhance rural arts organizations. Because rural areas have a low tax base, constituents in such areas often are at a disadvantage in establishing arts organizations. This program provides state funds to help organizations in these areas reach more constituents through programming or staffing.

Five Rural Arts Initiative grants originally approved in 1990, were renewed in 1991.

Greenwood Players in Menomonie, is making their organization more professional by increasing the number of paid actors who develop and tour new theater productions in rural Wisconsin. They produced an original play, Bright Fortune, which tells the story of the Hmong refugees in Wisconsin.

The **Lac du Flambeau Chippewa Museum and Cultural Center** in Lac du Flambeau, moved into a new facility and hired local artists to create permanent contemporary exhibits. The grant also enabled the museum to establish a reservation-based traditional arts and crafts workshop program.

White Pines Community Broadcasting in Rhinelander, is producing original programming featuring artists from northern Wisconsin. These programs have been aired on WXPR, the White Pines station, as well as over the Superior Public Radio Network, which includes stations in Wisconsin and Minnesota. White Pines will also increase sponsorship of community arts events.

The **Wisconsin Folk Museum** in Mount Horeb, expanded artistic and educational programs to a greater area of the rural Upper Midwest by hiring a rural outreach coordinator. The museum developed a fall festival event and published an award-winning book, Threshing Days.

The **Wisconsin Rural Development Center** in Black Earth, made a transition from being a presenter of other organizations' work to a producer of its own original works. Writer/farmer, Mike Irwin of Lodi, and musician/livestock breeder Joe Kimmel of Coleman have created "Rural Voices" a play involving music based on contemporary experiences of rural Wisconsin residents.



Selected woodcarvings, quilts, and weavings by Wisconsin artists on display at a 1991 exhibit at the Wisconsin Folk Museum.

ARTISTS-IN-EDUCATION

The Artists-in-Education Residency program (AIE) provides funds to schools and community agencies to cover expenses of five-day to year-long artist residencies. Artists are selected from the AIE Artists Directory. A panel selects artists based on their artistic excellence and experience in working with children.

This year 24 residencies were funded. This article, printed on May 26, 1991, in the *News Chronicle Sunday*, a Green Bay newspaper, describes one of these exciting projects.

Sturgeon emerges from playground

By Nancy Ellis
News Chronicle Sunday Reporter

If someone mentions they've recently seen a 17-foot-long sturgeon, rest assured it's no fish tale.

Of course, it's not the type of fish that's suitable for consumption. It is, however, fun and fascinating for both children and adults.

The sculpture, "The Emergin' Sturgeon," was designed and built by students at Baird Elementary School, 539 Laverne Drive. However, they did receive assistance from Madison-based sculptor Bill Grover.

The sculpture, which took two years of planning and work, will be completed when the concrete is poured and modeled around the steel frame.

Artist-in residence Grover has guided the students during his eight-week stay in Green Bay.

"The only criteria he set for the kids was that it would be outside and would be large enough to safely hold 30 kids. The kids like to climb all over the sculptures," said Jan McDonald, a Baird School parent and one of the organizers of the project.

One student each from kindergarten through third grade—and two students each from the fourth and fifth

grades—were chosen to help design the sculpture.

"We've had parents doing welding, helping the artist and advising the students," said McDonald.

McDonald said the project also has provided unforeseen benefits.

"There is a lot of curriculum crossover involved with the sculpture. Students are writing journals, learning about building scale models, and finding out what it takes to work together to

pouring the concrete and, with the guidance of Grover, will do the actual sculpting.

Years from now, when the fish starts to crumble from exposure to the elements, area residents will learn what kids of the 1990's thought was important.

Each of the school's 18 classes has created a time capsule that future generations may find interesting.

Before the concrete is poured over the reinforced steel structure, the time capsules will be deposited inside.

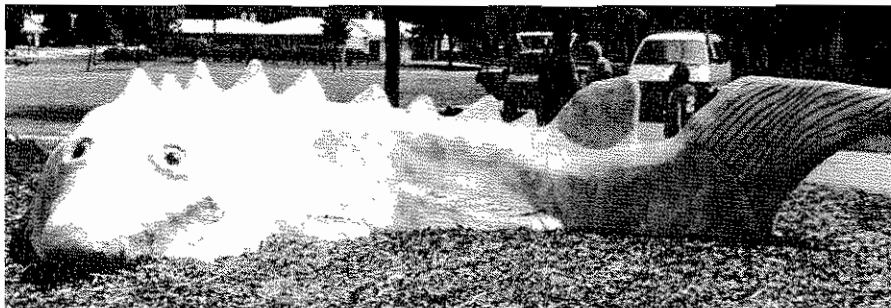
The Parent Teacher Organization at Baird applied to the Wisconsin Arts Board for a \$3,000 grant. The PTO raised the additional \$3,000 needed

for the sculpture by collecting donations from area businesses and local residents.

"Businesses have been great," McDonald said. "One donated a trailer where we store our supplies, another gave us the other various materials."

Baird School was one of four state schools chosen for the first model-strategy residency.

Baird received assistance in planning the residency and applying for the grant from Gibraltar High School in Fish Creek, which has received grants in the past.



accomplish a goal," she said.

"(With the artist's help), the kids took into account the wind changes, traffic noise and sunlight," McDonald said.

With the berm in place, the 17-foot-long, 5-foot-high fish will appear as if it were swimming through the water, according to McDonald.

To get all of the school's 500 students involved, all the children created their own tiles, which will be affixed to a berm surrounding the sculpture.

The students will also participate in

SALARY ASSISTANCE

Salary Assistance grants help professionalize small and mid-sized arts organizations by enabling them to create or expand new permanent staff positions. For a period of three years, a declining subsidy of the salary and benefits costs of the new employee is provided.

Among others, in fiscal year 1991, Folklore Village Farm of Dodgeville, an organization which has provided rural western Wisconsin with folk dance, music and cultural activities for many years, was able to hire a full-time professional director to carry out duties previously handled by volunteers.

Woodland Pattern, a bookstore, gallery and performance space in Milwaukee's artist colony West of the River neighborhood, added a store manager to enable the director to concentrate on exhibits and their performance series.

Wisconsin Ballet Theatre of Green Bay hired a General Manager to free up their artistic director for work on choreography.



Folk dancers at the Folklore Village Farm in Dodgeville.

PAN-WISCONSIN, WISCONSIN TOURING PROGRAM

The Performing Arts Network (PAN)-Wisconsin and the Wisconsin Touring Program, are the Wisconsin Arts Board's programs for presenting organizations. Such organizations provide the link between a community and its visiting and local performing artists. With the same care that an art museum takes in assembling an exhibit, a presenter assembles a season of performances for its community.

Wisconsin is blessed with a wealth of presenting organizations. Through the presenters, even the smallest community has access to performances that until recently could be seen only in large cities. Through PAN-Wisconsin or the Wisconsin Touring Program, Randy Sabien performed in Dodgeville and Sheboygan, Skylight Opera Theatre appeared in Minocqua and Ashland, and the Milwaukee Symphony Orchestra played in Ladysmith and Prairie du Chien.

Regional and National performing artists such as the Kronos String Quartet, Odetta, and the St. Paul Chamber Orchestra appeared in the state as well.

The Council for the Performing Arts, Jefferson, received the highest score from the panel reviewing the presenters' applications for 1990-91 events. The reviewers were particularly impressed with the organization's dedication to providing programming that addresses specialized needs within the community. Because a large portion of its audience is made up of people with disabilities, Access Touring Theatre was included in the 1990-91 season to "...help break down the barriers between the disabled and non-disabled worlds" in Jefferson.

In addition to the performance, the performers went to the St. Coletta School for the Developmentally Disabled and conducted a theater workshop with 25 of its students. According to Jane Wegner, Executive Director of the Council for the Performing Arts, the appearance of the Access Touring Theatre, "caused people in the community to question their concept of 'normal,' and provided much-needed inspiration to the students at St. Coletta's."



Cast of Access Touring Theatre's "Storm Reading".
Matthew Ingersoll, Kathryn Voice and Neil Marcus.

COMMUNITY ARTS PROGRAM

There are arts organizations in Wisconsin whose work it is to understand and nurture the creative expressions within their communities. Community may be defined by geographic boundaries such as towns or counties, or by similar jobs such as painters or musicians. Because of the uniqueness of these organizations in serving their communities, the Wisconsin Arts Board created a specific program for them--the Community Arts Program. Through this program, funding is available for projects that are developed with and for the communities that these organizations serve.

As an example, The "Pump House Regional Center for the Arts in La Crosse serves a multi-county region by producing a community arts calendar, sponsoring school residency programs, hosting performing arts events, operating a gallery for the work of regional artists, providing space for local arts groups, creating a link between the local Hmong and non-Hmong populations, and developing a growing community awareness of the arts through newspaper articles and advertising, as well as through a weekly radio program.

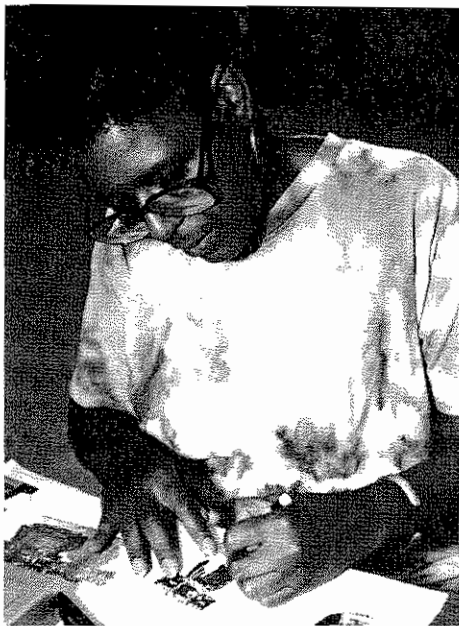
With the assistance of a grant from the Community Arts Program, The Pump House worked closely with business and community leaders, educators, artists, arts organizations, parents, seniors, social service providers, and a host of other community volunteers to develop a community-wide cultural needs assessment and plan for the La Crosse area. Said Jerilyn Dinsmoor of the project, "The plan has provided a much needed unified course of action for the arts in our region, as well as giving greater clarity of direction for The Pump House. An added benefit for our organization is that we are now being recognized as a driving force in our community."

Planning participants identified five major areas on which to concentrate in the coming years: developing collaborative marketing for the arts, building a community arts endowment fund, determining cultural facility needs, expanding access to the arts for all people in the region, and incorporating the arts into the revitalization of the downtown area.



The Pump House Regional Center for the Arts sets up A new exhibit for the LaCrosse community.

CONFERENCES & SERVICES



Phyllis Thompson, Art Teacher at Milwaukee's University School, participates in the bookmaking workshop, led by Caren Heft, hand-made bookmaker, and David Steingass, poet.

"The ATI week has given me a renewed vigor and ideas to start the school year. Many of the ideas and strategies I have been using in music can now be used in the other arts. I think I will be less intimidated incorporating more dance and drama in my classes after working with them and seeing how they have a similar form and structure as music. My own life is incredibly richer after the week with the ATI."

Shirley Steiner
Elementary Music Teacher,
Richland Center, WI
1991 ATI Participant

In addition to funding programs for organizations and individuals, the Wisconsin Arts Board also provides a number of services which offer additional opportunities for education, professional development, marketing and networking. Publications, directories, one-on-one technical assistance, meetings and conferences are among these services.

The staff and outside consultants provide workshops and assistance in areas such as grantwriting, program planning, audience development, and marketing.

On the national scene, WAB had the opportunity to host the NASAA Conference in Milwaukee, during September, 1990.

The *Bulletin*, a quarterly newsletter, provides feature articles, legislative news and information on opportunities, conferences, deadlines, and Wisconsin art news.

Wisconsin Art and Craft Fairs Directory, published annually, provides a comprehensive list of fairs throughout the state for those interested in attending, or selling their work.

The annual Fellowship Award Ceremony highlights Wisconsin's outstanding individual artists through a statewide program televised on WHA-TV's Primetime Wisconsin. It also allows state legislators to meet Wisconsin artists.

The **Artist Teacher Institute**, the "shining jewel" of Wisconsin's Artists-in-Education program, continued into its third year in 1991. Kindergarten through twelfth grade classroom teachers, arts specialists and administrators explored the creative process with many of Wisconsin's finest artists. During this week-long residential workshop on the UW-Madison's campus, participants gained hands-on experience in visual arts, dance, theatre, music, and multi-disciplinary sessions. Two new workshops were offered; a bookmaking workshop combining poetry with the skill of making books by hand, and "Artsquest", offering a multi-disciplinary approach to cultural heritage.

PANELISTS

*The Arts Board thanks all those who served on panels throughout the year.

Artistic Support I. Patricia Rusch. Panel Chair

Renee Barilleaux, Madison Art Center
Sheldon Wilner, American Players Theatre, Spring Green
Barbara Katz, Madison
Karla Zhe, River Falls
Gerry McKenna, UW-Stevens Point

Community Arts Program. Jill Pelisek. Panel Chair

Ben Di Salvo, Madison
Maggie Foote, Mable Tainter Memorial, Menomonie
Sarah Ford, Milwaukee Foundation
Lee Parker, Fox Valley Arts Alliance, Appleton

Folk Arts. *Folk Arts Opportunities. Patricia Rusch. Panel Chair

Mary Ellen Conoway, Racine Public Museum, Racine
Jerry Kahlert, Upper Midwest Folkways, La Cresente, MN
Margy McClain, Urban Traditions, Chicago, IL
Terry O'Grady, UW-Green Bay

Performing Arts Network/WI Touring. Gloria Kirking. Panel Chair

Joe Ahern, Milwaukee Performing Arts Center
Janis Lan-Ewert, Arts Midwest, Minneapolis, MN
John Potter, Phipps Center for the Arts, Hudson
Toni Sikes, Kraus Sikes, Inc., Madison
Teri Sullivan, Embassy Theatre Foundation, Ft. Wayne, IN

Salary Assistance. Jane Lathrop. Panel Chair

Karlyn Holman, Washburn
Sandra Jordan, Milwaukee
Lee Parker, Appleton
Dorothy Provis, Port Washington
Barry Robinson, Madison

Small Organization Support. Jill Pelisek. Panel Chair

Peter Baime, Wisconsin Conservatory of Music, Milwaukee
Dane Purdo, Lawrence University, Appleton
Virginia Topitzes, Milwaukee
Mary Yelangan, Great Lakes Film and Video, Milwaukee

Artistic Program Support. John Koci. Panel Chair

Kent Anderson, School Arts Magazine
Dean Gladden, The Cleveland Playhouse
Lisa James, Alverno College, Milwaukee
Emily Kass, Ft. Wayne Museum of Art, Ft. Wayne, IN
Joan Lounsberry, Pabst Theatre, Milwaukee
Malcolm Morrison, UW-Milwaukee
Peter Smith, Grand Rapids Symphony, Grand Rapids

Individual Artist Program

Music Composition Panel

Dorothy Rudd Moore, Composer, Soprano, New York, NY
Larry Ridley, Jazz Artist, New York, NY
George Cisneros, Composer, Musician, Austin, TX

Media Arts Panel

Bill Horrigan, Wexner Center for the Visual Arts, Columbus, OH
Margaret Caples, Community Film Workshop, Chicago, IL
Bill Paladino, Fresh Air Raido, Minneapolis, MN

Literary Arts Panel

Richard Peabody, Gargoyle, Bethesda, MD
Julie Crutcher, Playwright, Louisville, KY
Marina La Palma, Poet, Art Critic, Los Angeles, CA

Visual Arts Panel

Francis Kelly, American Craft Museum, New York, NY
Hung Liu, Artist, Mills College, Oakland, CA
Stephen Luecking, Sculptor, Teacher, Depaul Univ. Chicago, IL

Artist in Education. Educational Opportunities. Jim Carley. Panel Chair

Gene Belmas, Pine Lake Elementary, Rhinelander
Ellwyn Hendrickson, Menomonie H.S., Menomonie
Jerilyn Dinsmoor, Pumphouse Regional Center for the Arts, LaCrosse
Michael Walsh, Milwaukee Area Technical College

*Panels for FY92 programs.

FINANCE REPORT FISCAL 1991

REVENUE

Balance Forward (1)	\$39,624
Program Revenue Continuing	258,707
State of Wisconsin	2,421,800
National Endowment for the Arts	555,800
Program Revenue	<u>71,796</u>
Total Revenue	\$3,347,727

EXPENSES

ACI	Arts Challenge Initiative, Administration	\$758,675
APS I	Artistic Program Support I Organizations with budgets over \$400,000 Administration	\$389,742
APS II	Artistic Program Support II Organizations with budgets under \$400,000 Administration	\$125,475
ARTISTS-IN-EDUCATION	Artists-In-Education, Arts World, Site Reviews, Intern, Administration	\$185,075
ARTS INCUBATOR	Administration	\$ 9,981
ASBEG	Artist in Schools Basic Education, Administration	\$ 45,832
COMMUNITY ARTS	Local Arts Agencies, Administration	\$55,228
CULTURAL DIVERSITY	Administration	\$4,386
DANCE ON TOUR	Administration	\$6,669
DOWN HOME RADIO	Administration	\$3,402
IAP/FELLOWSHIPS	Individual Artist Program, Fellowships, Administration WHA	\$143,741
PAN/TOURING	Performing Arts Network, Wisconsin Touring, Administration	\$197,498
PERCENT FOR ARTS	Projects, Administration	\$90,560
PUBLIC INFORMATION	Publications, Information Requests and Brochures, Administration	\$87,218

FINANCE REPORT FISCAL 1991

RURAL ARTS INITIATIVE		\$93,044
Grants in aids, Administration		
SALARY ASSISTANCE		\$112,717
Salary Assistance, Administration		
SOS		\$61,210
Small Organizational Support, Administration		
SPECIAL PROGRAMS		\$25,000
Very Special Arts-WI, Milwaukee Ballet (appeal award)		
TRADITIONAL & ETHNIC ARTS		\$ 61,024
Folk Arts Apprenticeships, Folk Arts Opportunities, Administration		
OTHER AIDS		\$70,299
Dues, UW Interns, Governor's Portrait		
GENERAL ADMINISTRATION		<u>\$306,432</u>
Advocacy, Conferences, Strategic Planning/GEO POD Administration		
	Subtotal - Funds expended	\$3,079,240
ONGOING PROJECTS		
Funds Lapse	\$0	
Federal Carry-forward to FY91	\$41,867	
Continuing Projects (2)	\$226,620	
	Subtotal - Funds carried forward	\$268,487
Total Expenses		\$3,347,727

(1) Projects planned in FY90 and completed in FY91.

(2) Continuing Projects are Percent for Art projects that continue from year to year.

GRANTS AWARDED IN 1990-91

Key to Program Abbreviations

SA	Special Award	DG	Development Grants	NWA	New Work Awards
AIE	Artist-in-Education	EOG	Educational Opportunity Grants	PAN	Performing Arts Network
AP1	APS I (budgets +\$400,000)	FAO	Folk Arts Opportunity	RAI	Rural Arts Initiative
AP2	APSII (budgets \$50,000-\$400,000)	FAP	Folk Arts Apprenticeships	SAL	Salary Assistance
ASB	Arts in Schools Basic Ed. Grant Partners	FEL	Fellowships (part of IAP)	SOS	Small Organization Support
CAP	Community Arts Program	LAA	Local Arts Agencies	WTP	Wisconsin Touring Program

Out-of-state counties serving Wisconsin

Duluth-Superior Symphony Orch
AP2 Youth Training Orchestral Program \$ 1000

Film in the Cities
CAP Reg Film/Video Grants Program
Support for WI artists \$ 5000

Up North Films
AP2 Collaboration with Wisconsin Folk Museum \$ 5000

Ashland County
Northland College
PAN A 2-part performing arts series \$10,300

Barron County
Barron County Campus Fndn
SOS The Dean's List Big Band \$ 2349

Creative Stages Inc
SOS Summer Children's Theatre Workshop \$ 2220

Red Cedar Symphony Orchestra
SOS Red Cedar Symp Orch Concert Season \$ 2700

Red Cedar Symphony Orchestra
SAL Administrator \$ 250

Bayfield County
Lake Superior Big Top
PAN 1990 Season-Lake Superior Big Top \$ 3006

Brown County
Baird Elementary School PTO
ASB Sculpture/amphitheater \$ 3000

Emmons, Carol
FEL Sculpture \$ 5000

Green Bay Symphony Orchestra
AP2 Orchestra Development \$ 1000

Pamiro Opera Company
AP2 Opera Prod., Presentation, and Outreach \$ 2000

St. Norbert College
SOS Access to the Arts \$ 1628

UW-Green Bay Art Agency
SOS Linares Family Papier Mache Workshop \$ 1239

UW-Green Bay Artists Series
PAN Visiting Artists Series \$ 8560

Wisconsin Ballet Theatre Inc
AP2 Professional Support - Artistic \$ 2000

Wisconsin Ballet Theatre Inc
SAL General Manager \$ 5000

Columbia County
Bullet, Bobby
FAP Folk Arts Apprenticeship \$ 1411

Lonetree, Helen
FAP Folk Arts Apprenticeship \$ 2000

Crawford County
Prairie du Chien Comm Perf Art
PAN Performing Arts Concert Series \$ 4961

Dane County
Alexander, Elizabeth
FEL New \$ 5000

Ark Repertory Theatre
SAL Managing Director \$ 5000

Ballet Folklorico Mexico
FAO Reawaken of the Conchero Culture \$ 3000

Bero, Mary
DG Crafts: Fiber \$ 1000

Bolivian Folklore Tiawanacu FAO Carnival Festivities of Oruro - Bolivia	\$ 3000	Madison Festival of the Lakes WTP Concert by the Milwaukee Chamber Orch	\$ 1500
Chapman, Robin S. DG Poetry	\$ 1000	Madison Festival of the Lakes AP2 Ballet Chicago	\$ 2500
Children's Theatre of Madison AP2 New Words for Children, dance/play "The Red Shoes"	\$ 1250	Madison Music Collective Inc SOS Madison Music Collective presents...	\$ 2460
Connors, Michael G DG Interdisciplinary	\$ 1000	Madison Repertory Theatre AP1 Artistic Program Support I	\$ 15,000
Jazzworks Dance Company Inc SAL Business Manager	\$ 875	Marion, Carol DG Jazz	\$ 1000
Kanopy Dance Inc AP2 Support of New Works & Concert Touring	\$ 2500	Nechvatal, Dennis P NWA Painting	\$ 3500
Kercheval, Jesse Lee FEL Fiction	\$ 5000	Opera for the Young SOS Pirates of Penzance	\$ 2100
Lake View Elementary School AIE All Earth's Critters-Telling stories & writing songs	\$ 3575	Postsecondary Re-Entry Ed Prog AP2 Inside the Walls: Expanded/Series in Arts	\$ 5000
Lindbergh Elementary School AIE Creative Moves Into A New Century	\$ 4712	Progressive, The AP2 Progressive Graphic Artists in Wisconsin	\$ 500
Lowe, Myron FAP Folk Arts Apprenticeship	\$ 1411	Riley, Jocelyn SOS Mountain Wolf Woman	\$ 2580
Lowell Elementary School AIE Our World: Music Makes it Happen	\$ 2222	Ripple, Jeffrey C. DG Painting	\$ 1000
Madison Art Center AP1 Artistic Program Support I	\$ 15,000	Shapero, Janet DG Installations	\$ 1000
Madison Boychoir AP2 Madison Boychoir Music/Performance	\$ 2000	Stevens, Christine NWA Modern	\$ 3500
Madison Children's Museum AP2 Artistic Program Support II	\$ 1200	Sun Prairie Jr & Sr High Schs AIE Reflections of the Past	\$ 4409
Madison Children's Museum SAL Exhibits Developer	\$ 5098	TAP-IT Dancing & Theatrical Co SOS HAZING, A Multi-Media Play About Mythology	\$ 2456
Madison Civic Center CAP Arts Outreach to the Bayview Community	\$ 4000	TAP-IT Dancing & Theatrical Co SAL Business Manager	\$ 1400
Madison Civic Center PAN 1990-91 Season	\$ 19,602	Taylor, Thomas F DG Painting	\$ 1000
Madison Civic Center FAO Hmong Video Project	\$ 4040	Very Special Arts - Wisconsin *SA Legislative mandate - Chapter 20	\$ 15,000
Madison Civic Center LAA Community Arts Conference Subsidy	\$ 500	Wallace, Ronald NWA Poetry	\$ 3500
Madison Civic Music Assn AP2 Subscription Series of Madison Symph Orch	\$ 2500	Wis Alliance for Arts Educ *SA Implement ASBEG activities	\$ 28,621
		Wis Rural Development Center RAI The Voices of Rural Wisconsin	\$ 18,000

Wisconsin Center for PaperArts
CAP NEWS: PAPER
(newsletter of Wis Ctr for Paper Arts) \$ 1000

Wisconsin Chamber Orchestra
AP2 An Evening with Ransom Wilson \$ 750

Wisconsin Folk Museum
FAO Folk Arts Programming \$ 2000

Wisconsin Folk Museum
RAI Outreach Services Development \$ 18,000

Writers' Place, The
WTP Readings by WAB Literary Fellowship Winners \$ 75

Writers' Place, The
CAP Project Headstart \$ 300

Door County
Churchill, Thomas P
NWA Fiction \$ 3500

Gibraltar Area Schools
AIE Director, actress, teacher, Marion Lang \$ 836

Peninsula Music Festival
AP2 Orchestra Compensation \$ 2500

Peninsula Music Festival
SAL General Manager \$ 3750

Peninsula Players Theatre Fndn
AP1 Artistic Program Support I \$ 5000

Washington Island Schools
AIE Dimensions of Island Living \$ 3125

Douglas County
Bukoski, Anthony
DG Fiction \$ 1000

Nebagamon Community Assn
SOS Array of Activities \$ 2124

Dunn County
Gebben, Willem G
DG Crafts: Clay \$ 1000

Greenwood Players Chlds Thtr
RAI Bldg a Chldrn's Thtr to Serve Rural W. Wis \$ 18,000

Mabel Tainter Memorial
LAA Community Arts Conference Subsidy \$ 500

Mabel Tainter Memorial
PAN Performing Arts Season \$ 3300

Menomonie Public School System
AIE Cultures in Convergence \$ 6473

Eau Claire County
Chippewa Valley Museum
AP2 Support for the Artistic Program \$ 2500

Eau Claire Regional Arts Cncl
SAL Executive Director \$ 5642

Eau Claire Regional Arts Cncl
CAP A Series of Exhibitions \$ 2500

Haakenson, Bergine A
DG Poetry \$ 1000

UW-Eau Claire Artists Series
PAN The Artists Series \$ 4765

Fond du Lac County
Fond du Lac Symphonic Band Ltd
SOS 1990 Area Performances Project \$ 2400

Marian College
CAP Heritage Festival of the Arts \$ 1500

Waters Elementary, Elizabeth
AIE Multi-Disciplinary - Arch/Visual Arts \$ 3401

Grant County
Southwestern Wis Arts Assn.
SOS Children's Theatre \$ 500

UW-Platteville
PAN 1990-91 Performing Arts Series \$ 5750

Green County
Monroe Arts & Activities Cntr
PAN Premier Entertainment Series \$ 3460

School District of Brodhead
AIE Kanopy Dance, Inc. \$ 4045

Green Lake County
Green Lake Festival of Music
PAN The 11th Season (Summer Concert Series) \$ 5365

Iowa County
American Players Theatre Inc
AP1 Artistic Program Support I \$ 23,500

Dodgeville Cultural Arts Comm
WTP La Crosse Boychoir \$ 470

Folklore Village Farm
SAL Executive Director \$ 14,000

Jackson County
O'Brien, Polly
FAP Folk Arts Apprenticeship \$ 550

Jefferson County

Council for the Perf Arts SAL Technical Coordinator	\$ 780
Council for the Perf Arts PAN 1990-91 Performing Arts Series	\$ 8910
Ellis, Ron DG Poetry	\$ 1000

La Crosse County

La Crosse Dance Center SOS The Nutcracker Initial Performance	\$ 1661
La Crosse Symphony Orchestra AP2 America - Melting Pot of Cultures	\$ 4000
Pump House Reg Ctr for Arts PAN Lively Arts Subscription Series	\$ 5436
Pump House Reg Ctr for Arts AIE The Art Boat - Riverfest	\$ 1773
Pump House Reg Ctr for Arts CAP Strategic Cultural Plan - La Crosse	\$ 8000
Pump House Reg Ctr for Arts LAA Community Arts Conference Subsidy	\$ 500
School District of La Crosse AIE Get in the learning moo-oo-d!	\$ 4089
Viterbo College Fine Arts Ctr PAN 1990-91 Bright Star Season	\$ 7870

Lafayette County

Daley, Ronald E SOS The Third Blackhawk War	\$ 1693
--	---------

Manitowoc County

Capitol Civic Centre SAL Executive Director	\$ 10,289
Manitowoc Symphony Orchestra SAL Business Manager	\$ 1000
Manitowoc Symphony Orchestra SOS Viola Soloist Concert #1	\$ 2460
Reedsville Public School AIE Exploring an Eastern Aesthetic thru Raku	\$ 1484

Marathon County

Center for the Visual Arts SOS Ceramics Workshop/Studio	\$ 2400
--	---------

Leigh Yawkey Woodson Art Mus AP1 Artistic Program Support I	\$ 19,000
Wausau Conservatory of Music AP2 Faculty Outreach Artists Series	\$ 2500
Wausau Performing Arts Fndn PAN Performing Arts Fndtn 1990/91 Season	\$ 9665
Wausau Performing Arts Fndn LAA Community Arts Conference Subsidy	\$ 271
Wausau West High School AIE Discovering Sculpture	\$ 2223
Wausau West High School EOG Discovering Sculpture Curr Dev	\$ 211
Milwaukee County	
Agnew, Terese Marie NWA Sculpture	\$ 3500
Alverno College AP2 Dance/Video: The Alverno Summer Dance Inst	\$ 500
Alverno College PAN Alverno Presents	\$ 6930
Artist Series at the Pabst PAN Artist Series, 1990-91	\$ 3696
ARTREACH Milwaukee AP2 Touring Progs and Acting for Senior Adults	\$ 7300
Bauer Contemporary Ballet AP2 Artistic Program Support II	\$ 1750
Bel Canto Chorus AP2 Artistic Expansion 1990-91	\$ 3000
Bontly, Thomas J. NWA Fiction	\$ 3500
Camp, Elisa DG Drawing	\$ 1000
Cardinal Stritch College AP2 Catalogue/Mary Nohl Exhibit	\$ 500
Colorlines Foundation for Arts SOS Colorlines Magazine Growth & Expnsn Proj	\$ 2400
Cruz, Miguel FAP Folk Arts Apprenticeship	\$ 1411
Dancecircus Ltd AP2 4 Gallery Night Programs/Promo-broadcast	\$ 2000
Dancecircus Ltd SAL Company Manager	\$ 2500
Darmek, Dennis FEL Video	\$ 5000

Davis, Deborah NWA Performance Art	\$ 3500	Lincoln Elementary School AIE Nature Awareness & Recycled Instrument Bldg.	\$1961
Dean School AIE An Expression of Dean Life	\$ 2195	Lochman, Lindsay NWA Photography	\$ 3500
Downey, John FEL New	\$ 5000	Longfellow Middle School PTA AIE Imagination - A Creative Response to Life	\$ 3878
Early Music Now SOS From the Pens of Will & Sam: Shakespeare & Pepsy	\$ 750	LULAC Council #9900-Hispanic FAO La Rondalla de Milwaukee- Strolling Musicians of Milw.	\$ 5000
Early Music Now PAN Cultural Series of Early Music Perf.	\$ 3470	Marcus, Jeffrey S FEL Fiction	\$ 5000
Eisenhower Elem School AIE A relief sculpture, "A Garden of Growth"	\$ 1841	Media Jar SOS Media Jar Project	\$ 2700
Florentine Opera Company AP1 Artistic Program Support I	\$ 13,000	Milwaukee Art Museum AP1 Artistic Program Support I	\$ 60,000
Friends of the Hispanic Comm PAN Hispanic Performing Arts Series	\$ 5552	Milwaukee Arts Board LAA Community Arts Conference Subsidy	\$ 500
Great American Chlds Thtr Co AP2 Wisconsin Tour of <i>The Wind in the Willows</i>	\$ 4000	Milwaukee Ballet *SA Lisa De Ribere World Premiere	\$ 10,000
Great Lakes Opera Company AP2 Two one-act operas: The Cloak and The Lantern Marriage	\$ 1750	Milwaukee Chamber Orchestra AP2 Chamber Orchestra Concerts	\$ 2500
Gunderman, Karen FEL Crafts	\$ 5000	Milwaukee Inner City Arts Cncl CAP Midwest African American Thtr Alnc Conf	\$ 5700
Haggerty Museum of Art AP2 Richard Lippold: Sculpture, Models, Drawings, Photo	\$ 3000	Milwaukee Inner City Arts Cncl AP2 Artistic Program Support II	\$ 2000
Hanley, Aedan Alexander NWA Poetry	\$ 3500	Milwaukee Inner City Arts Cncl SAL Program Director	\$ 5250
Hansberry-Sands Theatre Co SOS Reach Out (Public Relations & Marketing)	\$ 2340	Milwaukee Inner City Arts Cncl CAP African-American Showcase Season	\$ 5000
Harway, Judith FEL Essay/Criticism	\$ 5000	Milwaukee Opera Company SAL Office Assistant	\$ 1966
Historical Keyboard Soc of Wis PAN Support for Guest Artist Series 1990/91	\$ 3390	Milwaukee Public Theatre AP2 Program Development and Production Project	\$ 7000
Jewish Community Ctr of Milw AP2 Traveling Children's Theatre	\$ 750	Milwaukee Repertory Theater AP1 Artistic Program Support I	\$ 70,000
Ko-Thi Dance Company Inc AP2 Program Expansion - 1990-91	\$ 7000	Milwaukee Symphony Orchestra AP1 Artistic Program Support I	\$ 95,000
La Escuela Fratney School AIE Creative Dramatics: A Way to Solve your problem	\$ 3095	Milwaukee Youth Symphony Orch. SAL Managing Director	\$ 2303
Lawson, Mark E. NWA Experimental	\$ 3500	Next Act Theatre, Inc. SAL Artistic Director	\$ 4750
		Next Act Theatre, Inc. AP2 1990-91 Artistic Development	\$ 2000

Next Act Theatre, Inc. AP2 New Works Development Program	\$ 2000	Wild Space Dance Co SOS Wild Space Dance Co. Season	\$ 2700
Ologboni, Tejumola FAP Folk Arts Apprenticeship	\$ 2000	Woodland Pattern, Inc. SAL Program Coordinator	\$ 8269
Pioneer Drum & Bugle Corps AP2 Expansion on Musical & Perf Training	\$ 2000	Woodland Pattern, Inc. PAN New Arts Sampler	\$ 4408
Present Music AP2 New Music For All Kinds Of People	\$ 5000	Woodland Pattern, Inc. AP2 Woodland Pattern	\$ 4000
Present Music SAL Managing Director	\$ 10,000	<i>Monroe County</i> Miner, Alma FAP Folk Arts Apprenticeship	\$ 1117
Robinson, Debra J. FEL Film	\$ 5000	Peterson, Dorothy E. FAP Folk Arts Apprenticeship	\$ 1327
Roldan, Luis F NWA Painting	\$ 3500	<i>Oneida County</i> Lakeland Performing Arts Assn PAN General Funding of LPAA Concert Series	\$ 1767
Salamun, Betty DG Modern	\$ 1000	Mackin, Margaret M. DG Painting	\$ 1000
Schneider, John NWA Theatre: General	\$ 3500	Rhineland Area Chlds Art Prg AIE "Opera for Everyone"	\$ 899
Skylight Opera Theatre AP1 Artistic Program Support I	\$ 23,500	White Pine Comm Brdcstg-WXPR RAI Audio Arts Coordinator—WXPR	\$ 18,000
Sylvan Winds, The SOS Amadeus Harmonie-Vogel Hall	\$ 1560	<i>Outagamie County</i> Fox Valley Arts Alliance LAA Community Arts Conference Subsidy	\$ 500
Sylvan Winds, The SAL Executive Director	\$ 1120	Van De Voorde, Steven FEL Photography	\$ 5000
Theatre X Inc AP2 Artistic Program Support II	\$ 2000	<i>Ozaukee County</i> Wisconsin Quilt History Proj FAO Wisconsin Quilt History Project	\$ 4000
Tippecanoe Schl for Humanities AIE A Celebration of Humanity	\$ 2119	<i>Pierce County</i> Wise, Mary Anne DG Crafts: Fiber	\$ 1000
UW-Milwaukee Fine Arts Progmng PAN UWM Great Artist Series	\$ 9504	<i>Polk County</i> Northern Lakes Chapter, AGO CAP The Northern Lakes Center for the Arts	\$ 2500
VanDerhei, Diane DG Modern	\$ 1000	Rivard, Connie FAP Folk Arts Apprenticeship	\$ 1984
Walker's Point Center for Arts PAN Multi-disciplinary, collaborative prgrmg	\$ 2294	<i>Portage County</i> Central Wis Symphony Orchestra AP2 CWSO 1990-91 Season	\$ 1750
Walker's Point Center for Arts AP2 Delivery of Artistic Programs/Visual & Performance Art	\$ 5000		
Ward, Adolphus DG Fiction	\$ 1000		
Wild Space Dance Co SAL Managing Director	\$ 3765		

Schneider, Richard C.
 DG Crafts: Clay \$ 1000

UW-Stevens Point Perf Arts
 PAN 1990-91 Performing Arts Series \$ 4423

Washington Elementary School
 AIE Muralist Caryl Yasko \$ 4527

Price County
 Price County Forestry Dept
 FAO Wis Concrete Park: Restoration Archive &
 Site Database \$ 2200

Price County Forestry Dept
 SOS Wisconsin Concrete Park Restoration Proj \$ 1760

Racine County
 Burlington Area Arts Council
 CAP Organizational Development Consultancy \$ 500

Burlington Area Schools
 ASB Celebrate the Burlington Area -
 Past, Present, Future \$ 2729

Caddy Vista PTA
 AIE Exploring our Musical Roots \$ 1285

Giese Elementary School
 AIE Active Learning Mural \$ 2488

Racine Symphony Orch Assn
 SAL Business Manager \$ 2500

Racine Symphony Orch Assn
 AP2 Artistic Program Support II \$ 2500

Wustum Museum Art Association
 AP2 Wustum Museum of Fine Arts Exhibition Prog \$ 2500

Wustum Museum Art Association
 SAL Assistant Curator \$ 2262

Rock County
 Beloit College Perf Arts Srs
 PAN Beloit College Performing Arts Series \$ 8639

Stage One, Incorporated
 SAL Executive Director \$ 11,500

Rusk County
 Flambeau Valley Arts Assn Inc
 PAN 1990-91 Performing Arts Series \$ 3379

Schultz, Evelyn
 FAP Folk Arts Apprenticeship \$ 1947

Sauk County
 Baraboo Schools
 EOG Visual Arts, Watercolor and Mural Making \$ 85

Sauk Prairie Schools
 ASB Music Moves Me \$ 2082

Sawyer County
 Hayward Community Schools
 AIE Bridging Cultures through Oral Traditions \$ 1061

Shawano County
 Okerlund, Christine Elizabeth
 FAP Folk Arts Apprenticeship \$ 1663

Sheboygan County
 John Michael Kohler Arts Ctr
 AP1 Artistic Program Support I \$ 26,000

School District of Kohler
 AIE Developing Student Expression \$ 1500

School District of Kohler
 EOG Developing Student Expression \$ 120

Sheboygan Arts Foundation
 PAN FOOTLIGHTS, Perf Arts Subscriptn Series &
 Residencies \$ 7266

Sheboygan Symphony Orchestra
 AP2 Gary Graffman Concert \$ 1500

Yang, Nao Chay
 FAP Folk Arts Apprenticeship \$ 1002

Vernon County
 Petersons, Rise
 NWA Crafts: Mixed Media \$ 3500

Vilas County
 Allard, Karen Anderson
 FAP Folk Arts Apprenticeship \$ 177

Dillman's Creative Arts Fndn
 FAO 2nd Annual Sand Lake Festival \$ 2760

Headwaters Council/Perf Arts
 PAN Headwaters Council-Performing Arts Series \$ 2458

Lac du Flambeau Chipp. Museum
 RAI Ancestral Art-Everyday Artists &
 Craftspeople Among Us \$ 18,000

Walworth County
 UW-Whitewater Cultural Affairs
 PAN 1990-91 Performing Arts Series \$ 11,088

Washington Elementary School	
AIE Artistic Investigation of Native American Culture	\$ 1735
 <i>Washburn County</i>	
North Woods Medical Coop	
SOS RAV'N (Rural Arts Voice North)	\$ 2220
Northwoods School District	
ASB Arts Options - Mural & Creative Writing	\$ 3000
 <i>Waukesha County</i>	
Groshek, Michalene	
DG Installations	\$ 1000
Kralj, Isabelle	
NWA Ballet	\$ 3500
Messer, Susan	
NWA Drawing	\$ 3500
Swallow School PTO	
SOS Cultural Arts - Language Arts Enrichment	\$ 800
Waukesha Civic Theatre	
AP2 Partake	\$ 2000
 <i>Winnebago County</i>	
Oshkosh Symphony Orchestra	
AP2 Verdi Requeim Performance	\$ 2000
Paine Art Ctr & Arboretum	
AP1 Artistic Program Support I	\$ 14,000
UW Center-Fox Valley	
PAN 1990-91 Performing Arts Series	\$ 1500
Xiong, Chong Vang	
FAP Folk Arts Apprenticeship	\$ 2000
 <i>Wood County</i>	
Carter, Alden R	
DG Fiction	\$ 1000
UW Center-Marshfield/Wood Co	
PAN Performing Arts Series	\$ 2819